

UNIGLASS

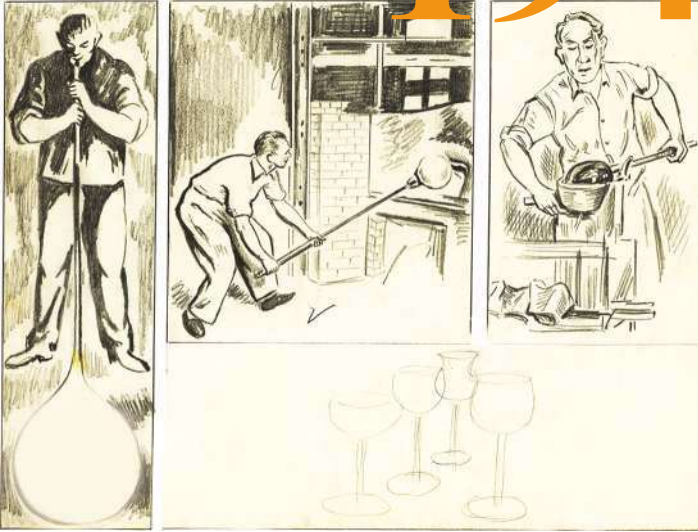


2023
Catalogue



UNIGLASS

since **1947**



Quality Flexibility
Customized
solutions

Variety

Designs

Shapes

Colors

Decors



UNIGLASS

Ambience

Enjoy moments



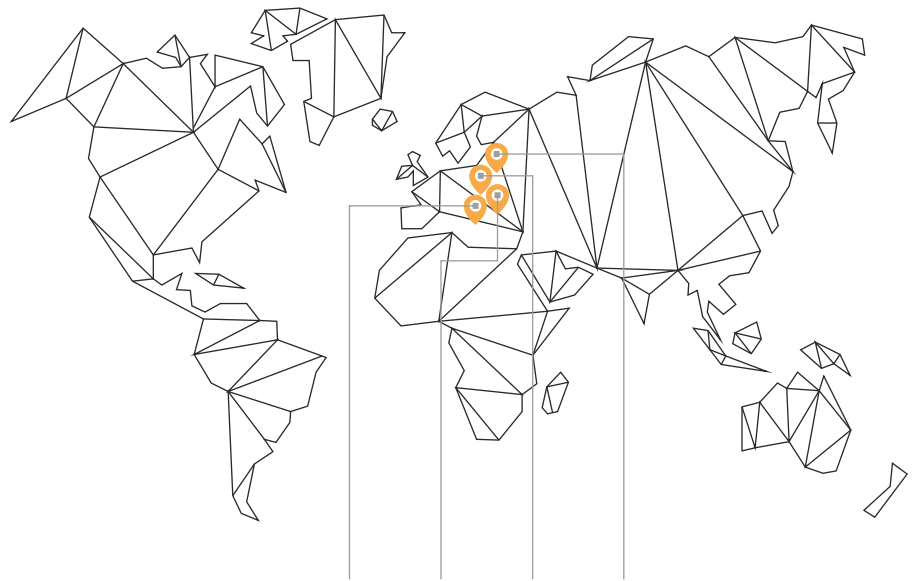
Pure pleasure



Set your table



Exports **70+** countries



C O N T E N T S

Περιεχόμενα - Съдържание - Cuprins - Содержание



Tumblers.....



Mugs.....



Decors.....



Salad & Other Bowls.....



Ice Cream Bowls.....



Pitchers.....



Carafes.....



Ashtrays.....



Accessories.....



Jars.....

1 - 72

74 - 76

78 - 83

86 - 87

90 - 91

94

96 - 99

102 - 104

106 - 107

110

ALPHABETICAL INDEX

Αλφαβητικό Ευρετήριο / Азбучен каталог / Index Alphabetic / алфавитный Индекс

A

64 AEGEAN
9 ALEXANDER
2 ALEXANDER SUPERIOR
20 ALLURE
68 ANIKA
32 ANTHEA
4-5 ARIADNE
74 AROMA
9 ARTEMIS
60 ASTRID
96 ATHOS
76 ATLANTA
61 ATLANTIC

B

72 BAMBOO
72 BANANA
14 BARREL
99 BERLIN
58 BILLY BECER
94 BISTROT

C

67 CANON
68 CANTI
66 CHEERIO
91 CHICAGO
65, 67 CHILE
46-47 CLASSICO
72 COCONUT
67 CONIC
32 CRYSLIS

D

78-83 DECORATED TUMBLERS
26 DIAMOND
38 DISCO
66 DORA
3 DREAM

E

110 ECON
56 ELISA
97 EVA

F

70 FIJI
71 FIJI COLORED
70 FIJI HIGHBALL
90 FLAMENGO
48 FRAPPE
49 FREDDO
49 FREDDOCCINO

G

62 GEO
66 GINA
29 GLORY
61 GRAND BAR
14 GRANDE

H

23 HERMES
40 HIVE
62 HIVE
74 HOLLYWOOD

I

56 ICEBERG
76 IRISH COFFEE
22 IUSTINA

K

17 KALITA
30 KASTALIA
11 KING STEMLESS
25 KOCHLIAS
25 KOSMOS
6-8, 10 KOUROS
26 KYKLOS
87 KYKLOS BOWLS STACKABLE
25 KYKNOS
25 KYMA
25 KYVOS

L

36 LIDO
40 LINEAR
74 LONDON
74 LOS ANGELES
50 LOTUS

M
59 MADALINA
106 MARGARITA
42-44, 67, 91 MAROCCO
40 MELISSA
74 MIAMI
67 MINI
27 MIST
74 MONACO
60 MONT BLANC
21, 57 MYKONOS

N
52 NICOL
67 NIKI
57 NONIC

O
102 OCTOGON
51 OKTANA
60 OLYMPUS
98 OLYMPUS CARAFE
20 ONDA
20 ONDA OPTIC
36-37 OSLO
96 OSSA
19, 67 OXFORD

P
99 PARIS
57 PILSNER
26 POLO
26 POP
53 PRINCE
26 PRISMA
55 PURE

Q
90 QUARTZ
1 QUEEN
1,11 QUEEN STEMLESS

R
60 RALU
76 RAMONA

55 RHOMBUS
27 RINGS
38 ROME
76 ROSES
107 ROUND
16 ROYAL
33 RYSTAL

S
45 SAHARA STACKABLE
86 SALAD BOWLS STACKABLE
102-103 SCOTCH
102-103 SELENA
34 SHINE
31 SITIA
90 SONIA
75 SORRENTO
27 SPIRAL
27 SQUARE
104 SQUARE ASHTRAY
107 SQUARE CANDLE HOLDER
15 STATUS
55 STREAK
27 STRIPES
18 SURF

T
69 TEA GLASS
69 TEA PLATE
41 TEXAS
41 TEXAS CREASED
41 TEXAS CUBE
41 TEXAS LINE
62-63 TRADITIONAL
35 TWIST

V
61 VAKHOS
107 VENDUZ
39 VIENNA
12-13 VIV
66 VIVA

Y
51 YAMAS

CODE INDEX

Ευρετήριο κωδικών - код на артикул
Code Index - код Индекс

CODE	NAMES	PAGES
21045	MARGARITA	106
22501	ECON	110
22502	ECON	110
22503	ECON	110
22504	ECON	110
22505	ECON	110
22506	ECON	110
22507	ECON	110
30100	COCONUT	72
30200	BAMBOO	72
30300	BANANA	72
30400	FIJI	70-71
30410	FIJI HIGHBALL	70-71
33001	VENDUZ	107
36001	ROUND	107
36002	SQUARE	107
39010	BISTROT	94
39011	BISTROT	94
39012	BISTROT	94
40801	PURE	55
40802	PURE	55
40803	PURE	55
40805	ROSES	76
40806	RAMONA	76
40811	RHOMBUS	55
40812	RHOMBUS	55
40813	RHOMBUS	55
40821	STREAK	55
40822	STREAK	55
40823	STREAK	55
44817	SALAD BOWLS STACKABLE	86
44818	SALAD BOWLS STACKABLE	86
44819	SALAD BOWLS STACKABLE	86
44851	SONIA	90
44852	MAROCCO	91
44853	CHICAGO	91
44854	FLAMENGO	90
44855	QUARTZ	90
44856	IRISH COFFEE	76
44918	KYKLOS STACKABLE BOWL	87
44919	KYKLOS STACKABLE BOWL	87
49001	TEA PLATE	69
50700	SORRENTO	75
50801	NICOL	52
50802	NICOL	52
50803	NICOL	52
50804	NICOL	52
50805	LONDON	74,78
50820	LOS ANGELES	74
50821	MIAMI	74
50822	HOLLYWOOD	74
50823	AROMA	74
50824	MONACO	74
50831	PRINCE	53
50832	PRINCE	53

50833	PRINCE	53
50834	ATLANTA	76
51019	RALU	60
51021	CHILE	65, 78
51031	MAROCCO	42, 44
51032	MAROCCO	43-44
51037	MAROCCO	42
51050	KYVOS	25
51051	KYMA	25
51052	KOSMOS	25
51053	KYKNOS	25
51054	KOCHLIAS	25
51055	KYKLOS	26
51056	POP	26
51057	PRISMA	26
51058	POLO	26
51070	OXFORD	19
51071	OXFORD	19
51072	GEO	62
51150	DIAMOND	26
51151	SPIRAL	27
51152	RINGS	27
51153	MIST	27
51154	STRIPES	27
51155	SQUARE	27
51500	ROYAL	16
51511	STATUS	15
52037	MAROCCO	42
52080	TEXAS	41
52081	TEXAS LINE	41
52082	TEXAS CUBE	41
52083	TEXAS CREASED	41
53008	CHILE	65
53037	MAROCCO	43
53038	MAROCCO	43
53047	MAROCCO	42
53050	KYVOS	25
53051	KYMA	25
53052	KOSMOS	25
53053	KYKNOS	25
53054	KOCHLIAS	25
53055	KYKLOS	26
53056	POP	26
53057	PRISMA	26
53058	POLO	26
53060	LINEAR	40
53061	HIVE	40
53062	MELISSA	40
53070	OXFORD	19
53080	TEXAS	41
53081	TEXAS LINE	41
53082	TEXAS CUBE	41
53083	TEXAS CREASED	41
53150	DIAMOND	26
53154	VAKHOS	61
53156	GRAND BAR	61
53173	TRADITIONAL	62

53177	MAROCCO	42
53187	TRADITIONAL	63
53203	SAHARA STACKABLE	45
53258	OLYMPUS	60
53300	OSLO	36-37
53301	DISCO	38
53302	LIDO	36
53303	OSLO	36-37
53304	DISCO	38
53305	LIDO	36
53309	ROME	38
53310	VIENNA	39
53313	ROME	38
53314	VIENNA	39
53360	LINEAR	40
53361	HIVE	40
53362	MELISSA	40
53401	TRADITIONAL	62
53402	HIVE	62
53500	ROYAL	16
53511	STATUS	15
53520	KALITA	17
54008	CHILE	65
54018	MADALINA	59
54026	AEGEAN	64
54035	MONT BLANC	60
54047	MAROCCO	43
54050	KYVOS	25
54051	KYMA	25
54052	KOSMOS	25
54053	KYKNOS	25
54054	KOCHLIAS	25
54055	KYKLOS	26
54056	POP	26
54057	PRISMA	26
54058	POLO	26
54070	OXFORD	19
54110	VAKHOS	61
54151	SPIRAL	27
54153	MIST	27
54158	OLYMPUS	60
54162	TRADITIONAL	63
54170	KYVOS	25
54173	AEGEAN	64
54174	KOCHLIAS	25
54178	KYKLOS	26
54179	KYMA	25
54187	TRADITIONAL	63
54303	OSLO	36
54304	DISCO	38
54305	LIDO	36
54313	ROME	38
54314	VIENNA	39
55006	ASTRID	60
55018	MADALINA	59
55026	GRAND BAR	61
55100	TRADITIONAL	63

55600	GRANDE	14
56018	MADALINA	59
56031	DORA	66
56032	VIVA	66
56037	MAROCCO	43, 67
56070	OXFORD	19, 67
56087	CHEERIO	66
56088	CHEERIO	66
56089	CHEERIO	66
56099	CONIC	67
56106	CHILE	65, 67
56108	MINI	67
56109	GINA	66
56116	NIKI	67
56119	GINA	66
56132	VIVA	66
56137	MAROCCO	43,67
56188	CHEERIO	66
58124	SALAD BOWLS STACKABLE	86
58125	SALAD BOWLS STACKABLE	86
58126	SALAD BOWLS STACKABLE	86
58127	SALAD BOWLS STACKABLE	86
58228	SALAD BOWLS STACKABLE	86
58926	KYKLOS STACKABLE BOWL	87
58927	KYKLOS STACKABLE BOWL	87
58928	KYKLOS STACKABLE BOWL	87
60055	SELENA	102-103
60056	SCOTCH	102-103
60065	OCTOGON	102
60075	SQUARE	104
60806	SELENA	102-103
60807	SCOTCH	102
65110	OSSA	96
65125	OSSA	96
65150	OSSA	96
65210	OLYMPUS	98
65225	OLYMPUS	98
65250	OLYMPUS	98
65310	ATHOS	96
65325	ATHOS	96
65350	ATHOS	96
65410	EVA	97
65425	EVA	97
65450	EVA	97
69010	BERLIN	99
69120	PARIS	99
69210	BERLIN	99
69220	PARIS	99
69510	BERLIN	99
69520	PARIS	99
91002	QUEEN STEMLESS	1, 11
91010	IUSTINA	22
91012	KING STEMLESS	11
91100	CLASSICO	46
91200	CLASSICO	46
91203	CLASSICO	46
91206	CLASSICO	46, 79-81,83

91210	CLASSICO	46
91230	ANTHEA	32
91400	CLASSICO	47
91402	CLASSICO	47
91404	YAMAS	51
91500	KOUROS	10
91502	KOUROS	6
91503	ALEXANDER	9
91504	ARIADNE	4
91507	ALEXANDER SUPERIOR	2
91508	DREAM	3
91516	QUEEN	1
91517	ALEXANDER SUPERIOR	2
91550	VIV	12-13
91600	FRAPPE	48, 78
91701	KASTALIA	30
91702	RYSTAL	33
91705	CRYSALIS	32
91706	SHINE	34
91800	GLORY	29
91805	TWIST	35
91810	SITIA	31
91900	SURF	18
92150	BILLY BECER	58
92151	BILLY BECER	58
92152	BILLY BECER	58
92200	PILSNER	57
92250	BILLY BECER	58
92301	MYKONOS	21
92400	MYKONOS	21, 57
92500	ELISA	56
92502	KOUROS	6
92503	FREDDO	49, 78
92504	FREDDO	49
92505	FREDDOCCINO	49
92506	ARIADNE	5
92507	LOTUS	50
92508	LOTUS	50
92509	IUSTINA	22
92516	ICEBERG	56
92519	ICEBERG	56
92520	HERMES	23
92521	HERMES	23
92522	HERMES	23
92524	ARIADNE	5
92530	OKTANA	51
92531	OKTANA	51
92600	GRANDE	14, 82-83
92610	BARREL	14
92802	NONIC	57
93002	QUEEN STEMLESS	1, 11
93012	KING STEMLESS	11
93100	CLASSICO	47
93102	CLASSICO	47
93301	MYKONOS	21
93302	ONDA	20
93303	ONDA OPTIC	20

93304	ALLURE	20
93401	KASTALIA	30
93500	GLORY	29
93502	KOUROS	6
93503	ALEXANDER	9
93504	ARIADNE	4
93507	ALEXANDER SUPERIOR	2
93508	DREAM	3
93516	QUEEN	1
93550	VIV	13
93600	GRANDE	14, 83
93702	RYSTAL	33
93705	CRYSLIS	32
93706	SHINE	34
93805	TWIST	35
93810	SITIA	31
94001	CANTI	68
94002	ANIKA	68
94010	IUSTINA	22
94100	CLASSICO	47
94300	GLORY	29
94401	KASTALIA	30
94500	MYKONOS	21
94502	KOUROS	6
94503	ALEXANDER	9
94504	ARIADNE	4
94507	ALEXANDER SUPERIOR	2
94508	DREAM	3
94516	QUEEN	1
94702	RYSTAL	33
94705	CRYSLIS	32
94706	SHINE	34
94805	TWIST	35
94810	SITIA	31
95002	ATLANTIC	61
95100	CLASSICO	47
95101	CLASSICO	47
95200	CANON	67
95201	LOTUS	50
95202	FREDDO	49
95502	KOUROS	7
95504	ARIADNE	5
95514	ARIADNE	5
96502	KOUROS	7
96503	KOUROS	7
96504	KOUROS	7-8
96505	ARIADNE	4
96507	ALEXANDER SUPERIOR	2
96508	DREAM	3
96510	ARTEMIS	9
97502	KOUROS	7
99001	TEA GLASS	69
99002	TEA GLASS	69
99003	TEA GLASS	69
99011	TEA GLASS	69

Tumblers

stemware



91516

Water
C: 58cl - 19½oz
H: 230mm
Ø: 93mm
Pack: BX6



93516

Red wine
C: 47cl - 16oz
H: 221mm
Ø: 86,5mm
Pack: BX6



94516

White wine
C: 36,5cl - 12½oz
H: 202mm
Ø: 80mm
Pack: BX6



91002

Water
C: 46,5cl - 15½oz
H: 110mm
Ø: 88mm
Pack: MC12



93002

Wine
C: 34,5cl - 11½oz
H: 99mm
Ø: 80mm
Pack: MC12



Alexander Superior



91517

Water
C: 42cl - 14oz
H: 205mm
Ø: 90mm
Pack: BX6



91507

Water
C: 32,5cl - 11oz
H: 196mm
Ø: 82,5mm
Pack: BX6



93507

Red wine
C: 24,5cl - 8¼oz
H: 185mm
Ø: 74,4mm
Pack: BX6



94507

White wine
C: 18cl - 6oz
H: 174mm
Ø: 69,5mm
Pack: BX6



96507

Champagne
C: 18,5cl - 6¼oz
H: 205mm
Ø: 64mm
Pack: BX6





91508	93508	94508	96508
Water	Red wine	White wine	Champagne
C: 38cl - 12 ³ / ₄ oz	C: 28cl - 9 ¹ / ₂ oz	C: 22,5cl - 7 ² / ₃ oz	C: 19,5cl - 6 ¹ / ₂ oz
H: 210mm	H: 195mm	H: 185mm	H: 210mm
Ø: 86mm	Ø: 77mm	Ø: 71mm	Ø: 68mm
Pack: BX6	Pack: BX6	Pack: BX6	Pack: BX6



Ariadne



91504

Water
C: 28cl - 9½oz
H: 169mm
Ø: 78,5mm
Pack: GB6
SC6
MC12



93504

Red wine
C: 24cl - 8oz
H: 165mm
Ø: 75mm
Pack: GB6
SC6
MC12



94504

White wine
C: 18,5cl - 6¼oz
H: 155mm
Ø: 71mm
Pack: GB6
SC6
MC12



96505

Champagne
C: 18,5cl - 6¼oz
H: 190mm
Ø: 64mm
Pack: GB6
MC12





92506

Beer/Cocktail
 C: 36,5cl - 12½oz
 H: 190mm
 Ø: 76,5mm
 Pack: GB6
 SC6
 MC12



92524

Cocktail
 C: 43cl - 14½oz
 H: 207mm
 Ø: 77mm
 Pack: MC12



95514

Grappa
 C: 13,5cl - 4½oz
 H: 172mm
 Ø: 64mm
 Pack: MC12



95504

Liqueur
 C: 5,5cl - 1¾oz
 H: 112mm
 Ø: 50mm
 Pack: GB6
 MC12

Kouros



91502

Water
C: 27,5cl - 9½oz
H: 160mm
Ø: 82mm
Pack: GB6
SC6
MC12



92502

Beer
C: 39cl - 13oz
H: 160mm
Ø: 86mm
Pack: GB6
SC6
MC12



93502

Red wine
C: 21cl - 7oz
H: 147mm
Ø: 76mm
Pack: GB6
SC6
MC12



94502

White wine
C: 16,5cl - 5½oz
H: 133mm
Ø: 70mm
Pack: GB6
SC6
MC12



96502

Champagne
C: 23cl - 7¾oz
H: 131mm
Ø: 100mm
Pack: GB6
SC6
MC12

96503

Champagne
C: 15,5cl - 5¼oz
H: 111mm
Ø: 89mm
Pack: SC6
MC12

96504

Champagne
C: 18,5cl - 6¼oz
H: 188mm
Ø: 64mm
Pack: GB6
SC6
MC12

97502

Cognac
C: 25cl - 8½oz
H: 116mm
Ø: 82mm
Pack: GB6
MC12

95502

Liqueur
C: 6cl - 2oz
H: 112mm
Ø: 50mm
Pack: GB6
SC6
MC12



Kouros Colored



96504/CG01



96504/CG02



96504/CG04



96504/CG05



96504/CG06



96504/CG07

96504/CG68-SCV6





91503

ALEXANDER Water
C: 32,5cl - 11oz
H: 180mm
Ø: 82,5mm
Pack: GB6
SC6
MC12



93503

ALEXANDER Red wine
C: 24,5cl - 8¼oz
H: 169mm
Ø: 74,4mm
Pack: GB6
SC6
MC12



94503

ALEXANDER White wine
C: 18cl - 6oz
H: 160mm
Ø: 69,5mm
Pack: GB6
SC6
MC12



96510

ARTEMIS Champagne
C: 11,5cl - 3¾oz
H: 154mm
Ø: 58mm
Pack: SC6
SC12

93503/CG68-SCV6



Kouros



91500

Water
C: 36cl - 12oz
H: 143mm
Ø: 68,5mm
Pack: SL3
MC12



91500/CB01-SV3



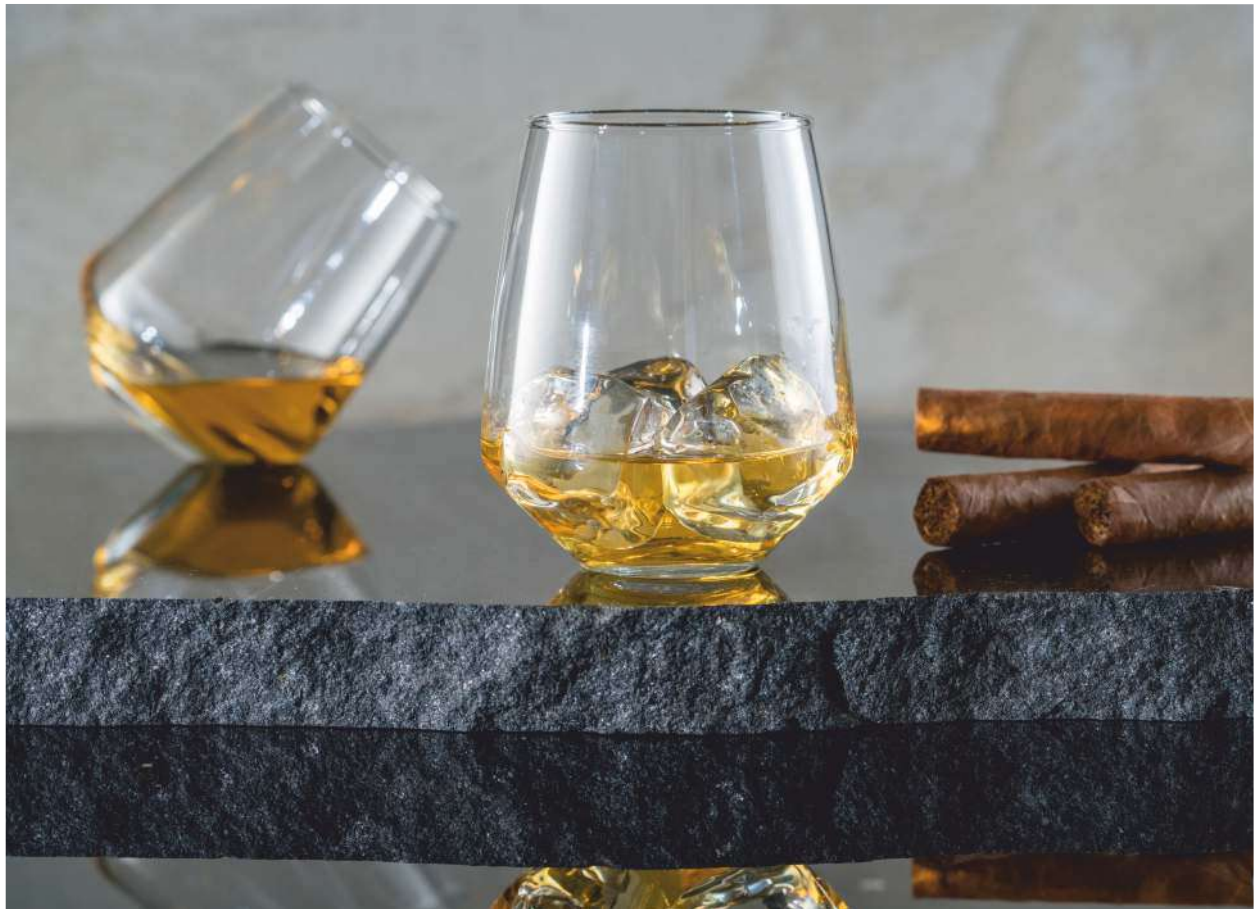
91500/CB02-SV3



91500/CB05-SV3



91500/CB52-SV3



91012

KING STEMLESS Water
 C: 41cl - 13¾oz
 H: 105mm
 Ø: 88mm
 Pack: MC12



93012

KING STEMLESS Wine
 C: 35cl - 11¾oz
 H: 100mm
 Ø: 83,5mm
 Pack: MC12



91002

QUEEN STEMLESS Water
 C: 46,5cl - 15¾oz
 H: 110mm
 Ø: 88mm
 Pack: MC12



93002

QUEEN STEMLESS Wine
 C: 34,5cl - 11¾oz
 H: 99mm
 Ø: 80mm
 Pack: MC12

Viv Colored



91550/CB01-SV3

91550/CB02-SV3

91550/CB03-SV3

91550/CB04-SV3

91550/CB05-SV3

91550/CB06-SV3

CB51-SV3
Orange, Violet, Yellow





91550

Water
 C: 48,5cl - 16½oz
 H: 153,5mm
 Ø: 84,5mm
 Pack: SL3
 MC12



93550

Whisky
 C: 38cl - 12¾oz
 H: 103mm
 Ø: 90mm
 Pack: SL3
 MC12



Grande / Barrel



92600

GRANDE Maxi
C: 51cl - 17oz
H: 121mm
Ø: 90mm
Pack: SL3
MC12



93600

GRANDE Midi
C: 35cl - 11¾oz
H: 89mm
Ø: 85mm
Pack: MC12



55600

GRANDE Mini
C: 20cl - 6¾oz
H: 58mm
Ø: 82mm
Pack: MC12



92610

BARREL
C: 51cl - 17oz
H: 121mm
Ø: 90mm
Pack: MC12

92600/CB48-SV3





51511

Water
 C: 48cl - 16¼oz
 H: 156mm
 Ø: 83mm
 Pack: GB6
 MC12



53511

Whisky
 C: 38,5cl - 13 oz
 H: 106mm
 Ø: 88mm
 Pack: GB6
 MC12

Royal



51500

Water
C: 33,5cl - 11½oz
H: 148,5mm
Ø: 70mm
Pack: SL3
MC12



53500

Whisky
C: 30,5cl - 10½oz
H: 92mm
Ø: 82mm
Pack: SL3
MC12





53520

Whisky
C: 34cl - 11½oz
H: 99,5mm
Ø: 85,5mm
Pack: MC12

Surf



91900

Water 39
 C: 38,5cl - 13oz
 H: 135mm
 Ø: 73mm
 Pack: SL3
 GB6
 MC12



91900/CB02-SV3



91900/CB03-SV3



91900/CF01-SV3



91900/CF05-SV3



CB50-SV3
 Green, Orange, Violet



51070

Water
C: 29cl - 9¾oz
H: 158mm
Ø: 69,5mm
Pack: MC12



51071

Water
C: 33cl - 11oz
H: 158mm
Ø: 74mm
Pack: MC12



53070

Whisky
C: 25,5cl - 8¾oz
H: 98mm
Ø: 88mm
Pack: MC12



54070

Wine
C: 15cl - 5oz
H: 81mm
Ø: 77,5mm
Pack: MC12



56070

Liqueur
C: 4,5cl - 1½oz
H: 59mm
Ø: 50mm
Pack: MC96

Onda / Allure



93302

ONDA
C: 23cl - 7¾oz
H: 111mm
Ø: 75mm
Pack:



93303

ONDA OPTIC
C: 23cl - 7¾oz
H: 111mm
Ø: 75mm
Pack:



93304

ALLURE
C: 26,5cl - 9oz
H: 114mm
Ø: 73,7mm
Pack:



92301	92400	93301	94500	92301/CB01-SV6	92301/CB03-SV6
Water C: 28cl - 9½oz H: 130mm Ø: 73mm Pack: SL6 MC12	Beer C: 31cl - 10½oz H: 165mm Ø: 66mm Pack: SL6 MC12	Juice C: 24cl - 8oz H: 122mm Ø: 69mm Pack: SL6 MC12	Wine C: 13,5cl - 4½oz H: 100mm Ø: 61mm Pack: SL6 MC12		





92509

Beer
C: 33cl - 11oz
H: 153mm
Ø: 69,5mm
Pack: SL6
MC12



91010

Juice
C: 29cl - 9¾oz
H: 106mm
Ø: 80mm
Pack: SL6
MC12



94010

Wine
C: 18cl - 6oz
H: 92mm
Ø: 70mm
Pack: SL6
MC12





92521

C: 47,5cl - 16oz
H: 165mm
Ø: 84,5mm
Pack: MC12



92520

C: 37,5cl - 12 $\frac{2}{3}$ oz
H: 152mm
Ø: 80mm
Pack: MC12



92522

C: 30cl - 10oz
H: 144mm
Ø: 75mm
Pack: MC12



Water
 C: 24,5cl - 8¼oz
 H: 130mm
 Ø: 66mm
 Pack: SL6

Juice
 C: 19cl - 6½oz
 H: 98,5mm
 Ø: 68mm
 Pack: SL6

Whisky
 C: 28,5cl - 9¾oz
 H: 89,5mm
 Ø: 81mm
 Pack: SL6

Wine
 C: 15,5cl - 5¼oz
 H: 79mm
 Ø: 65mm
 Pack: SL6

KYVOS



51050



54170



53050



54050

KYMA



51051



54179



53051



54051

KOSMOS



51052



53052



54052

KYKNOS



51053



53053



54053

KOCHLIAS



51054



54174



53054



54054

Water
C: 24,5cl - 8¼oz
H: 130mm
Ø: 66mm
Pack: SL6

Juice
C: 19cl - 6½oz
H: 98,5mm
Ø: 68mm
Pack: SL6

Whisky
C: 28,5cl - 9¾oz
H: 89,5mm
Ø: 81mm
Pack: SL6

Wine
C: 15,5cl - 5¼oz
H: 79mm
Ø: 65mm
Pack: SL6

KYKLOS



51055



54178



53055



54055

POP



51056



53056



54056

PRISMA



51057



53057



54057

POLO



51058



53058



54058

DIAMOND



51150



53150

Water
 C: 24,5cl - 8¼oz
 H: 130mm
 Ø: 66mm
 Pack: SL6

Juice
 C: 19cl - 6½oz
 H: 98,5mm
 Ø: 68mm
 Pack: SL6

Whisky
 C: 28,5cl - 9¾oz
 H: 89,5mm
 Ø: 81mm
 Pack: SL6

Wine
 C: 15,5cl - 5¼oz
 H: 79mm
 Ø: 65mm
 Pack: SL6

SPIRAL



51151



54151

RINGS



51152

MIST



51153



54153

STRIPES



51154

SQUARE



51155



Set 12pcs
(6 water + 6 wine)

- 87450: Kyvos
- 87451: Kyma
- 87452: Kosmos
- 87453: Kyknoas
- 87454: Kochlias
- 87455: Kyklos
- 87456: Pop
- 87457: Prisma
- 87458: Polo

Set 18pcs
(6 water + 6 whisky + 6 wine)

- 87300: Kyvos
- 87301: Kyma
- 87302: Kosmos
- 87303: Kyknoas
- 87304: Kochlias
- 87305: Kyklos
- 87306: Pop
- 87307: Prisma





91800

Water
 C: 36,5cl - 12½oz
 H: 137mm
 Ø: 73mm
 Pack: SL6



93500

Whisky
 C: 30cl - 10oz
 H: 95mm
 Ø: 79mm
 Pack: SL6



94300

Wine
 C: 20cl - 6¾oz
 H: 85mm
 Ø: 69mm
 Pack: SL6



Kastalia



91701

Water
 C: 26,5cl - 9oz
 H: 142mm
 Ø: 61mm
 Pack: SL3
 GB6



93401

Whisky
 C: 23cl - 7¾oz
 H: 88mm
 Ø: 73mm
 Pack: SL3
 GB6



94401

Wine
 C: 18cl - 6oz
 H: 80mm
 Ø: 67mm
 Pack: SL3
 GB6





91810

Water
 C: 38cl - 12 $\frac{3}{4}$ oz
 H: 148mm
 Ø: 70mm
 Pack: SL3
 SL6



93810

Whisky
 C: 30cl - 10oz
 H: 95mm
 Ø: 74mm
 Pack: SL3
 SL6



94810

Wine
 C: 20cl - 6 $\frac{2}{3}$ oz
 H: 82mm
 Ø: 67mm
 Pack: SL3
 SL6

Crysalis / Anthea



91705

CRYSLIS Water
C: 29,5cl - 10oz
H: 142mm
Ø: 63mm
Pack: SL3
GB6



93705

CRYSLIS Whisky
C: 28,5cl - 9½oz
H: 90mm
Ø: 78mm
Pack: SL3
GB6



94705

CRYSLIS Wine
C: 19,5cl - 6½oz
H: 82mm
Ø: 66mm
Pack: SL3
GB6



91230

ANTHEA Water
C: 26,5cl - 9oz
H: 142mm
Ø: 61mm
Pack: SL3
GB6





91702

Water
 C: 31,5cl - 10 $\frac{3}{4}$ oz
 H: 142mm
 Ø: 67mm
 Pack: SL3
 SL6
 GB6



93702

Whisky
 C: 29cl - 9 $\frac{3}{4}$ oz
 H: 92mm
 Ø: 78mm
 Pack: SL3
 SL6
 GB6



94702

Wine
 C: 19cl - 6 $\frac{1}{2}$ oz
 H: 85mm
 Ø: 67,6mm
 Pack: SL3
 SL6
 GB6





91706

Water
C: 36cl - 12oz
H: 147mm
Ø: 68mm
Pack: SL3



93706

Whisky
C: 26cl - 8 $\frac{3}{4}$ oz
H: 90mm
Ø: 74mm
Pack: SL3



94706

Wine
C: 17cl - 5 $\frac{3}{8}$ oz
H: 82mm
Ø: 64mm
Pack: SL3





91805

Water
C: 36,5cl - 12½oz
H: 150mm
Ø: 70,5mm
Pack: SL3
MC12



93805

Whisky
C: 24cl - 8oz
H: 88mm
Ø: 75mm
Pack: SL3
MC12



94805

Wine
C: 16cl - 5½oz
H: 80mm
Ø: 65mm
Pack: SL3
MC12



91805/CB03-SV3



91805/CB05-SV3



91805/CB15-SV3





53303	53300	54303	53305	53302	54305
OSLO Water C: 31,5cl - 10 ³ / ₄ oz H: 137mm Ø: 82mm Pack: SL3 MC12	OSLO Whisky C: 24cl - 8oz H: 88mm Ø: 89,5mm Pack: SL3 MC12	OSLO Wine C: 14cl - 4 ³ / ₄ oz H: 80mm Ø: 75mm Pack: SL3 MC12	LIDO Water C: 31,5cl - 10 ³ / ₄ oz H: 137mm Ø: 82mm Pack: SL3	LIDO Whisky C: 24cl - 8oz H: 88mm Ø: 89,5mm Pack: SL3	LIDO Wine C: 14cl - 4 ³ / ₄ oz H: 80mm Ø: 75mm Pack: SL3





53303/CL01-SV3



53303/CL03-SV3



53303/CL05-SV3



53300/CL01-SV3



53300/CL03-SV3



53300/CL05-SV3

53300/CL52-SV3



Disco / Rome



53304

DISCO Water
C: 31,5cl - 10 $\frac{3}{4}$ oz
H: 137mm
Ø: 82mm
Pack: SL3



53301

DISCO Whisky
C: 24cl - 8oz
H: 88mm
Ø: 89,5mm
Pack: SL3



54304

DISCO Wine
C: 14cl - 4 $\frac{3}{4}$ oz
H: 80mm
Ø: 75mm
Pack: SL3



53313

ROME Water
C: 31,5cl - 10 $\frac{3}{4}$ oz
H: 137mm
Ø: 82mm
Pack: SL3
MC12



53309

ROME Whisky
C: 24cl - 8oz
H: 88mm
Ø: 89,5mm
Pack: SL3
MC12



54313

ROME Wine
C: 14cl - 4 $\frac{3}{4}$ oz
H: 80mm
Ø: 75mm
Pack: SL3
MC12





53314

Water
 C: 31,5cl - 10³/₄oz
 H: 137mm
 Ø: 82mm
 Pack: SL3



53310

Whisky
 C: 24cl - 8oz
 H: 88mm
 Ø: 89,5mm
 Pack: SL3



54314

Wine
 C: 14cl - 4³/₄oz
 H: 80mm
 Ø: 75mm
 Pack: SL3

Melissa / Hive / Linear



53362

MELISSA Water
C: 34,5cl - 11½oz
H: 137mm
Ø: 82mm
Pack: SL3
MC12



53062

MELISSA Whisky
C: 28,5 cl - 9¾oz
H: 98mm
Ø: 88mm
Pack: SL3
MC12



53361

HIVE Water
C: 34,5cl - 11½oz
H: 137mm
Ø: 82mm
Pack: SL3
MC12



53061

HIVE Whisky
C: 28,5 cl - 9¾oz
H: 98mm
Ø: 88mm
Pack: SL3
MC12



53360

LINEAR Water
C: 33,5cl - 11¼oz
H: 137mm
Ø: 82mm
Pack: MC12



53060

LINEAR Whisky
C: 28,5 cl - 9¾oz
H: 98mm
Ø: 88mm
Pack: MC12



52080

Water
C: 38,5cl - 13oz
H: 124,5mm
Ø: 85,5mm
Pack: MC12



52081

Line Water
C: 38cl - 12¾oz
H: 124,5mm
Ø: 85,5mm
Pack: SL3
MC12



52082

Cube Water
C: 38cl - 12¾oz
H: 124,5mm
Ø: 85,5mm
Pack: SL3
MC12



52083

Creased Water
C: 38cl - 12¾oz
H: 124,5mm
Ø: 85,5mm
Pack: SL3
MC12



53080

Whisky
C: 27cl - 9oz
H: 90mm
Ø: 87mm
Pack: SL3
MC12



53081

Line Whisky
C: 27cl - 9oz
H: 90mm
Ø: 87mm
Pack: SL3
MC12



53082

Cube Whisky
C: 27cl - 9oz
H: 90mm
Ø: 87mm
Pack: SL3
MC12



53083

Creased Whisky
C: 27cl - 9oz
H: 90mm
Ø: 87mm
Pack: SL3
MC12



52037

Water XL
C: 62,5cl - 21oz
H: 176mm
Ø: 95mm
Pack: MC12



53047

Water L
C: 32,5cl - 11oz
H: 142mm
Ø: 77,5mm
Pack: SL6
MC12



51037

Water
C: 28cl - 9½oz
H: 142mm
Ø: 70mm
Pack: SL6
MC12



53177

Water XL
C: 41cl - 13¾oz
H: 130mm
Ø: 88mm
Pack: MC12



51031

Water
C: 35cl - 11¾oz
H: 121mm
Ø: 84mm
Pack: SC6
MC6
MC12
PB30
PB48



					
51032	53038	53037	54047	56137	56037
Water C: 27cl - 9oz H: 120mm Ø: 77mm Pack: MC12 PB48	Whisky C: 27cl - 9oz H: 92mm Ø: 86mm Pack: MC12	Whisky C: 23cl - 7¾oz H: 85mm Ø: 82,5mm Pack: SL6 SC6 MC12	Wine C: 14cl - 4¾oz H: 75,5mm Ø: 72mm Pack: SL6 MC12	Liqueur C: 4,5cl - 1½oz H: 85mm Ø: 40mm Pack: SL6 MC24	Liqueur C: 3cl - 1oz H: 55mm Ø: 49mm Pack: SL6 MC96



Marocco Colored



51031/CF02



51031/CF01



51031/CF26



51031/CF04



51032/CF03





Sahara - Stackable



53203



53203/CB01



53203/CB05



53203/CF01



53203/CF04

Water
C: 34,5cl - 11 $\frac{3}{4}$ oz
H: 150mm
Ø: 74,5mm
Pack: MC12

53203/CB50-SV3



Classico



91100

Water 28
C: 27,5cl - 9½oz
H: 161mm
Ø: 58mm
Pack: MC12



91203

Water 24
C: 24cl - 8oz
H: 152mm
Ø: 58mm
Pack: MC12



91200

Water 29
C: 26,5cl - 9oz
H: 143mm
Ø: 60mm
Pack: SL3
MC12



91206

Water 27
C: 27cl - 9oz
H: 137mm
Ø: 60mm
Pack: MCT6
MC12



91210

Water 33
C: 32,5cl - 11oz
H: 161mm
Ø: 62mm
Pack: SL3
MC12

91206/CB50-SV6





91400

Ouzo 21
C: 19,5cl - 6½oz
H: 143mm
Ø: 55mm
Pack: MC12



95100

Ouzo 14
C: 14cl - 4¾oz
H: 100mm
Ø: 54mm
Pack: MC12



91402

Ouzo 22
C: 21cl - 7oz
H: 152mm
Ø: 53mm
Pack: MC12



95101

Ouzo 17
C: 16,5cl - 5½oz
H: 125mm
Ø: 52,5mm
Pack: MC12



93100

Whisky 24
C: 22,5cl - 7¾oz
H: 88mm
Ø: 73mm
Pack: SL3
MC12



94100

Wine 16
C: 16cl - 5½oz
H: 80mm
Ø: 67mm
Pack: SL3
MC12



93102

Whisky 29
C: 28cl - 9½oz
H: 93mm
Ø: 79mm
Pack: SL3
MC12

Frappé



91600

C: 29cl - 9¾oz

H: 157mm

Ø: 64mm

Pack: SL3

MCT6

MC12





92503

FREDDO
C: 26,5cl - 9oz
H: 178mm
Ø: 63mm
Pack: SL3
GB6
MC12



92504

FREDDO
C: 18,5cl - 6¼oz
H: 153mm
Ø: 63mm
Pack: SL3
MC12



95202

FREDDO
C: 7cl - 2½oz
H: 100mm
Ø: 50mm
Pack: BX6



92505

FREDDOCCINO
C: 36cl - 12oz
H: 146mm
Ø: 74mm
Pack: MC12





92507

Water 33
C: 31,5cl - 10%oz
H: 170mm
Ø: 73mm
Pack: SL3
MC12



92508

Juice 25
C: 24cl - 8oz
H: 130mm
Ø: 77mm
Pack: SL3
MC12



95201

Ouzo 17
C: 18cl - 6oz
H: 149mm
Ø: 59mm
Pack: SL3
MC12





92530

OKTANA
C: 33cl - 11oz
H: 162mm
Ø: 82mm
Pack: MC12



92531

OKTANA
C: 25cl - 8½oz
H: 142mm
Ø: 76mm
Pack: MC12



91404

YAMAS Ouzo
C: 18,5cl - 6¼oz
H: 148mm
Ø: 58,5mm
Pack: MC12



50802

Beer
C: 50cl - 17oz
H: 159mm
Ø: 89mm
Pack: MCT6



50803

Beer
C: 40cl - 13½oz
H: 147mm
Ø: 81,5mm
Pack: MCT6



50801

Beer
C: 30cl - 10oz
H: 130mm
Ø: 75mm
Pack: MCT6



50804

Beer
C: 25cl - 8½oz
H: 124mm
Ø: 72mm
Pack: MCT6



50832

Beer
C: 50cl - 17oz
H: 154mm
Ø: 85mm
Pack: MCT6



50833

Beer
C: 40cl - 13½oz
H: 144mm
Ø: 79,5mm
Pack: MCT6



50831

Beer
C: 30cl - 10oz
H: 131,5mm
Ø: 72,5mm
Pack: MCT6





40802

PURE
C: 50cl - 17oz
H: 180mm
Ø: 87mm
Pack: MCT6



40803

PURE
C: 40cl - 13½oz
H: 170mm
Ø: 83,4mm
Pack: MCT6



40801

PURE
C: 30cl - 10oz
H: 154mm
Ø: 73mm
Pack: MCT6



40812

RHOMBUS
C: 50cl - 17oz
H: 180mm
Ø: 87mm
Pack: MCT6



40813

RHOMBUS
C: 40cl - 13½oz
H: 170mm
Ø: 83,4mm
Pack: MCT6



40811

RHOMBUS
C: 30cl - 10oz
H: 154mm
Ø: 73mm
Pack: MCT6



40822

STREAK
C: 50cl - 17oz
H: 180mm
Ø: 87mm
Pack: MCT6



40823

STREAK
C: 40cl - 13½oz
H: 170mm
Ø: 83,4mm
Pack: MCT6



40821

STREAK
C: 30cl - 10oz
H: 154mm
Ø: 73mm
Pack: MCT6

Beer Tumblers



92516

ICEBERG
C: 36cl - 12oz
H: 165mm
Ø: 67,5mm
Pack: MC12



92519

ICEBERG
C: 25cl - 8½oz
H: 139mm
Ø: 61mm
Pack: MC12



92500

ELISA
C: 30cl - 10oz
H: 159mm
Ø: 66mm
Pack: MC12



92200

PILSNER
C: 29,5cl - 10oz
H: 178mm
Ø: 77,5mm
Pack: SL3
GB6
MC12



92400

MYKONOS
C: 31cl - 10½oz
H: 165mm
Ø: 66mm
Pack: SL6
MC12



92802

NONIC
C: 33cl - 11oz
H: 121mm
Ø: 77,5mm
Pack: MC12



Billy Becer



92250

Beer
C: 60,5cl - 20½oz
H: 185mm
Ø: 80,5mm
Pack: MC12



92150

Beer
C: 37cl - 12½oz
H: 151mm
Ø: 69,5mm
Pack: MC12



92151

Beer
C: 31,5cl - 10¾oz
H: 130mm
Ø: 68mm
Pack: MC12



92152

Beer
C: 22,5cl - 7¾oz
H: 100mm
Ø: 63mm
Pack: MC24



54018

Wine
C: 20cl - 6¾oz
H: 96mm
Ø: 74mm
Pack: SC6
MC48



55018

Vodka
C: 11,5cl - 3¾oz
H: 80mm
Ø: 61mm
Pack: SC6
MC48



56018

Liqueur
C: 4,5cl - 1½oz
H: 58mm
Ø: 45mm
Pack: SC12
MC96

Olympus / Mont Blanc / Ralu / Astrid



53258

OLYMPUS Water
C: 26,5cl - 9oz
H: 112mm
Ø: 73,5mm
Pack: SL6



54158

OLYMPUS Wine
C: 15cl - 5oz
H: 89mm
Ø: 62mm
Pack: SL6
MC48



54035

MONT BLANC Wine
C: 14,5cl - 4¾oz
H: 86mm
Ø: 64,5mm
Pack: SL6
MC48



51019

RALU Water
C: 22cl - 7½oz
H: 100mm
Ø: 72mm
Pack: SL6
MC12



55006

ASTRID Wine
C: 11,5cl - 3¾oz
H: 80mm
Ø: 60mm
Pack: SL6
MC72





53156

GRAND BAR Water
C: 21,5cl - 7¼oz
H: 124mm
Ø: 63mm
Pack: SC12
MC48



55026

GRAND BAR Wine
C: 11,5cl - 3¾oz
H: 71mm
Ø: 62mm
Pack: SC12



53154

VAKHOS Water
C: 27cl - 9oz
H: 98mm
Ø: 83mm
Pack: SC12



54110

VAKHOS Wine
C: 12,5cl - 4oz
H: 78,5mm
Ø: 64mm
Pack: SC12



95002

ATLANTIC Wine
C: 16cl - 5½oz
H: 89mm
Ø: 63mm
Pack: SL6
MC72

Traditional



51072

GEO Water 41
C: 35cl - 11 $\frac{1}{4}$ oz
H: 158mm
Ø: 74mm
Pack: SL3
MC12



53173

Water
C: 28cl - 9 $\frac{1}{2}$ oz
H: 124mm
Ø: 78mm
Pack: MC48



53401

Whisky
C: 24,5cl - 8 $\frac{1}{4}$ oz
H: 94,5mm
Ø: 79mm
Pack: MC12



53402

HIVE Whisky
C: 24,5cl - 8 $\frac{1}{4}$ oz
H: 94,5mm
Ø: 79mm
Pack: MC12



54162

Wine
C: 15cl - 5oz
H: 79mm
Ø: 65mm
Pack: MC12



53187

Whisky
C: 20cl - 6 $\frac{2}{3}$ oz
H: 81mm
Ø: 79,5mm
Pack: MC12



54187

Wine
C: 17,5cl - 6oz
H: 73mm
Ø: 75,5mm
Pack: MC12



55100

Liqueur
C: 10,5cl - 3 $\frac{1}{2}$ oz
H: 63,5mm
Ø: 63,5mm
Pack: MC12



55100/CF01



55100/CF12



55100/CF10



55100/CF11



54026

Ouzo
 C: 17cl - 5½oz
 H: 123,5mm
 Ø: 58mm
 Pack: SL6
 MC48



54173

Water / Juice
 C: 19cl - 6½oz
 H: 98,5mm
 Ø: 68mm
 Pack: SL6
 MC48



54173/CF02-SV6



54173/CF04-SV6



54173/CF05-SV6



54173/CF06-SV6





51021

Water 26
C: 25,5cl - 8¾oz
H: 132mm
Ø: 66mm
Pack: SL3
SC6
MC12



53008

Whisky 25
C: 24,5cl - 8¼oz
H: 83mm
Ø: 76mm
Pack: SL6
MC12



54008

Wine 19
C: 18cl - 6oz
H: 80mm
Ø: 68,5mm
Pack: MC12



56106

Liqueur 5,7
C: 5,7cl - 2oz
H: 67mm
Ø: 45mm
Pack: MC96



Shot Glasses



56188

CHEERIO Liqueur
C: 6cl - 2oz
H: 90mm
Ø: 50mm
Pack: SL6
MC24



56087

CHEERIO Liqueur
C: 4,7cl - 1½oz
H: 71mm
Ø: 45mm
Pack: MC96



56088

CHEERIO Liqueur
C: 3,4cl - 1oz
H: 71mm
Ø: 45mm
Pack: SL6
MC96



56089

CHEERIO Liqueur
C: 2,1cl - ¾oz
H: 71mm
Ø: 45mm
Pack: MC96



56031

DORA Liqueur
C: 4,5cl - 1½oz
H: 59mm
Ø: 50mm
Pack: MC96



56132

VIVA Liqueur
C: 8cl - 2¾oz
H: 83mm
Ø: 57,5mm
Pack: SL6
MC24
MC72



56032

VIVA Liqueur
C: 5,5cl - 1¾oz
H: 63mm
Ø: 50,5mm
Pack: SL6
MC96



56119

GINA Liqueur
C: 5cl - 1½oz
H: 57mm
Ø: 48mm
Pack: SC12
MC96



56109

GINA Liqueur
C: 3cl - 1oz
H: 51mm
Ø: 43mm
Pack: SC12



56088/CF04-SV6



56088/CB50-SV6



56116

NIKI Liqueur
C: 6,6cl - 2¼oz
H: 105mm
Ø: 41,5mm
Pack: MC24
MC96



95200

CANON Liqueur
C: 8cl - 2¾oz
H: 107mm
Ø: 49mm
Pack: SL6
MC24



56137

MAROCCO Liqueur
C: 4,5cl - 1½oz
H: 85mm
Ø: 40mm
Pack: SL6
MC24



56037

MAROCCO Liqueur
C: 3cl - 1oz
H: 55mm
Ø: 49mm
Pack: SL6
MC96



56070

OXFORD Liqueur
C: 4,5cl - 1½oz
H: 59mm
Ø: 50mm
Pack: MC96



56106

CHILE Liqueur
C: 5,7cl - 2oz
H: 67mm
Ø: 45mm
Pack: MC96



56108

MINI Liqueur
C: 4cl - 1¼oz
H: 52mm
Ø: 44mm
Pack: SC12



56099

CONIC Liqueur
C: 4,5cl - 1½oz
H: 59mm
Ø: 50mm
Pack: MC96

56037/CF67-SV6



95200/CV650-SV6

Anika / Canti



94002

ANIKA
C: 24,5cl - 8¼oz
H: 81mm
Ø: 72,5mm
Pack: MC12



94001

CANTI
C: 26cl - 8¾oz
H: 80mm
Ø: 74mm
Pack: MC12



99001

C: 12,5cl - 4oz
H: 83mm
Ø: 57mm
Pack: SL6
MC72



99002

C: 12cl - 4oz
H: 90mm
Ø: 60mm
Pack: SL6
MC72



99003

C: 10,5cl - 3½oz
H: 84mm
Ø: 57mm
Pack: SL6
MC72



99011

C: 12cl - 4oz
H: 83mm
Ø: 57mm
Pack: SL6
MC72



49001

H: 23,5mm
Ø: 102mm
Pack: BX12



30400

FIJI
C: 50cl - 17oz
H: 130mm
Ø: 87,3mm
Pack: MCT6



30410

FIJI HIGHBALL
C: 50cl - 17oz
H: 150mm
Ø: 74,3mm
Pack: MCT6



30400/CF001



30400/CF029



30400/CF201



30400/CF202



30400/CF203



30400/CF204



30410/CF001



30410/CF029



30410/CF201



30410/CF202



30410/CF203



30410/CF204

Cocktail Glass



30100

COCONUT
C: 50cl - 17oz
H: 140,5mm
Ø: 83,4mm
Pack: MCT6



30200

BAMBOO
C: 50cl - 17oz
H: 140,5mm
Ø: 83,4mm
Pack: MCT6



30300

BANANA
C: 50cl - 17oz
H: 140,5mm
Ø: 83,4mm
Pack: MCT6



Mugs

Mugs



50820

LOS ANGELES
C: 27cl - 9oz
H: 114mm
Ø: 79mm
Pack: MC12



50821

MIAMI
C: 30cl - 10oz
H: 100mm
Ø: 89mm
Pack: MC12



50822

HOLLYWOOD
C: 26,5cl - 9oz
H: 97mm
Ø: 84mm
Pack: MC12



50823

AROMA
C: 38,5cl - 13oz
H: 117,5mm
Ø: 96,5mm
Pack: MC12



50805

LONDON
C: 32cl - 10¾oz
H: 95mm
Ø: 80mm
Pack: MCT6



50824

MONACO
C: 25cl - 8½oz
H: 89,5mm
Ø: 72mm
Pack: MC12



50822/C135CO37



50820/C136CO38



50700

SORRENTO
C: 8cl - 2 $\frac{3}{4}$ oz
H: 58mm
Ø: 62mm
Pack: BX6

Mugs



44856

IRISH COFFEE
C: 22,5cl - 7½oz
H: 147mm
Ø: 74mm
Pack: MCT6



50834

ATLANTA Coffee mug
C: 30cl - 10oz
H: 106mm
Ø: 71,5mm
Pack: MCT6



40805

ROSES Coffee mug
C: 26cl - 8¾oz
H: 99mm
Ø: 72mm
Pack: MC12



40806

RAMONA Coffee mug
C: 27cl - 9oz
H: 106mm
Ø: 72mm
Pack: MC12

Decoris

Decorated



LONDON

C: 32cl - 10½oz
H: 95mm
Ø: 80mm
Pack: MCT6



50805/D06
LATTE MACCHIATO



50805/D07
LATTE SPOON

FREDDO

C: 26,5cl - 9oz
H: 178mm
Ø: 63mm
Pack: SL3



92503/D03
LATTE MACCHIATO



92503/D04
LATTE SPOON

FRAPPÉ

C: 29cl - 9¾oz
H: 157mm
Ø: 64mm
Pack: SL3



91600/D01
ON ICE



91600/D02
COFFEE TIME



91600/D03
COFFEE-LATTE



91600/D17
WEEKEND



91600/D16
COFFEE ILLUSTRATIONS



91600/D18
COFFEE SCENT

CHILE 26

C: 25,5cl - 8¾oz
H: 132mm
Ø: 66mm
Pack: SL6



51021/D12
DARK BLUE ARCS



51021/D13
YELLOW ARCS



51021/D14
ORANGE ARCS



51021/D59
BLOSSOM



51021/D34
FLOWERS



51021/D33
BUTTERFLY



CLASSICO 27

C: 27cl - 9oz
H: 137mm
Ø: 60mm
Pack: SL6



91206/D51
AQUA-LEMON-ORANGE



91206/D51
AQUA-LEMON-ORANGE



91206/D51
AQUA-LEMON-ORANGE



91206/D66
COLORED CUBES



91206/D62
COLORED FIGURES



91206/D137
BLOSSOM



91206/D154
CYCLIST



91206/D155
SKIING



91206/D31
FRESH



91206/D128
HAWAII FLOWERS



91206/D128
HAWAII FLOWERS



91206/D128
HAWAII FLOWERS



91206/D153
LIFE



91206/D312
LIFESTYLE



91206/D329
VACATION TIME



91206/D322
OCEAN LIFE

Decorated



91206/D116 RIBBON BRANCH
91206/D87 EVITA
91206/D98 SILVIA
Code: 91206/D103 RANDA
91206/D06 TULIP



91206/D260 WHEAT
91206/D261 GRAPES
91206/D202 RETRO PARTY
91206/D435 LEAVES
91206/D434 HEARTS



91206/D379 PARIS
91206/D409 LOVE YOUR LIFE
91206/D404 SWEET POPS
91206/D408 FABRIC
91206/D436 FLORAL



91206/D412 FIBRES
91206/D412 FIBRES
91206/D412 FIBRES
91206/D407 ROMBS
91206/D433 SLOTH



91206/D13
SANTA CLAUS



91206/D14
XMAS VILLAGE



91206/D27
SNOWMAN



91206/D152
SNOWMAN FAMILY



91206/D151
SNOWFLAKES



91206/D289
XMAS MOON



91206/D290
MERRY XMAS DEERS



91206/D291
SANTA & RUDOLF



91206/D292
SANTA & RUDOLF NIGHT



91206/D293
XMAS MAGIC



91206/D294
SILENT NIGHT



91206/D295
XMAS STORY



91206/D296
HOME FOR XMAS



91206/D297
XMAS COTTAGE



91206/D298
SUGAR SANTA



91206/D299
RUDY



91206/D348
CHRISTMAS OWLS



91206/D343
SANTA'S MAIL

Decorated



GRANDE
 C: 51cl - 17oz
 H: 121mm
 Ø: 90mm
 Pack: SL3
 MC12



92600/D14
DRINK ME



92600/D14
DRINK ME



92600/D14
DRINK ME



92600/D01
PARROT



92600/D02
PINK FLORAL



92600/D03
LEMONADE



92600/D04
TIKI



92600/D05
PINK & BRONZE SQUARES



92600/D06
CIRCLES



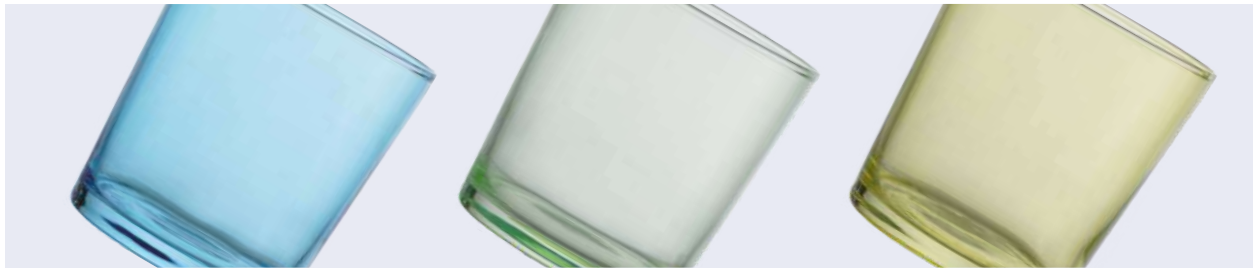
92600/D10
FRUITS



92600/D10
FRUITS



92600/D10
FRUITS



92600/CF32



92600/CF008



92600/CF34



92600/CB05



92600/CB04



92600/CB06



93600/CF12



93600/CF21



93600/CF22



93600/CF25



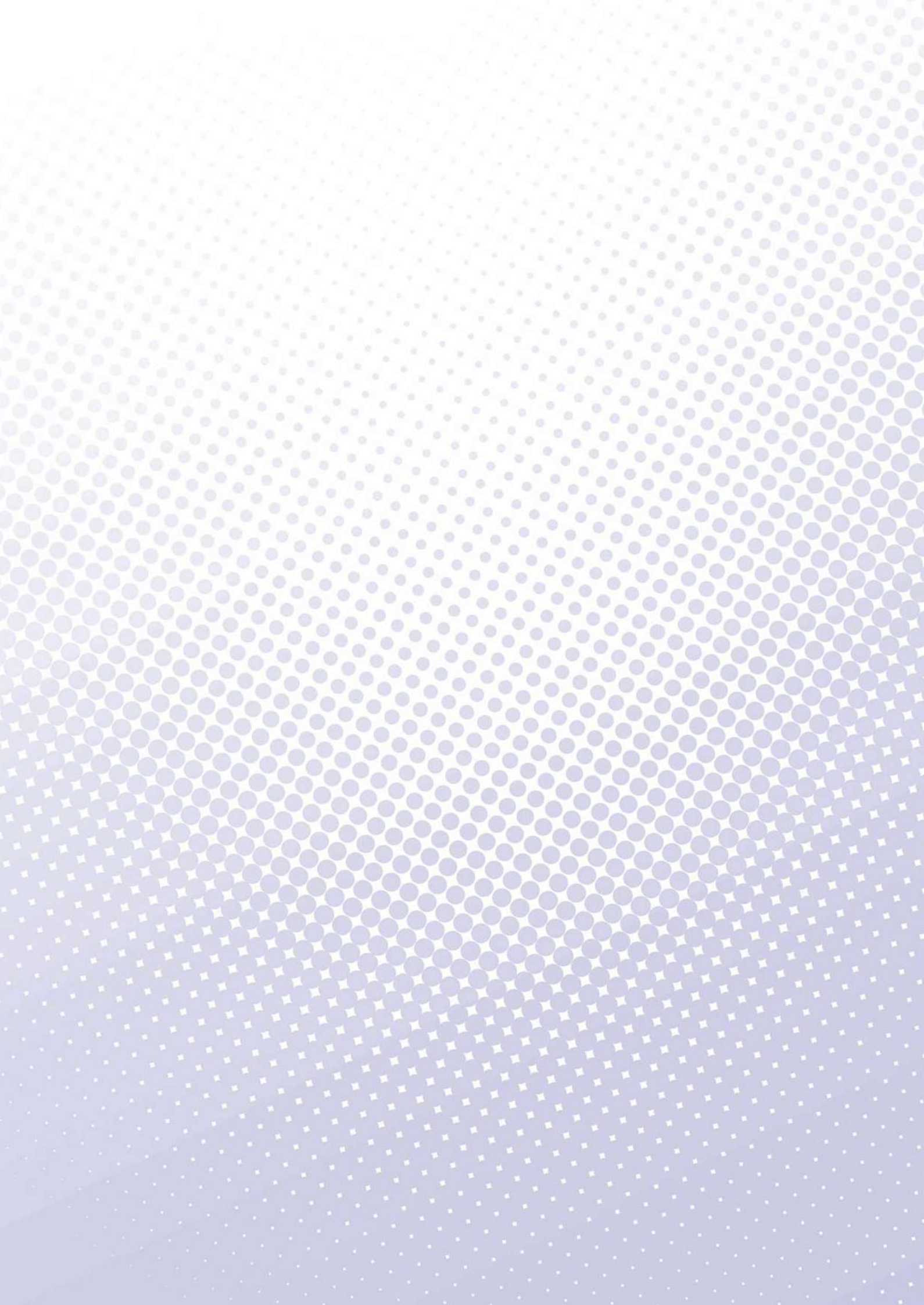
91206/CB02



91206/CB04



91206/CB06



Salad & Other Bowls

Salad Bowls - Stackable



58228

H: 95mm
Ø: 220mm
Pack: BX6



58127

H: 77mm
Ø: 170mm
Pack: BX6



58126

H: 64,5mm
Ø: 140mm
Pack: BX6



44819

H: 55,5mm
Ø: 121mm
Pack: BX6



44818

H: 47,5mm
Ø: 106mm
Pack: BX6



58125

H: 40mm
Ø: 90mm
Pack: BX6



44817

H: 34mm
Ø: 75mm
Pack: BX6



58124

H: 26mm
Ø: 60mm
Pack: BX6





58928

H: 95mm
Ø: 220mm
Pack: BX6
ST5



58927

H: 77mm
Ø: 170mm
Pack: BX6
ST5



58926

H: 64,5mm
Ø: 140mm
Pack: BX6
ST5



44919

H: 55,5mm
Ø: 121mm
Pack: BX6
ST5



44918

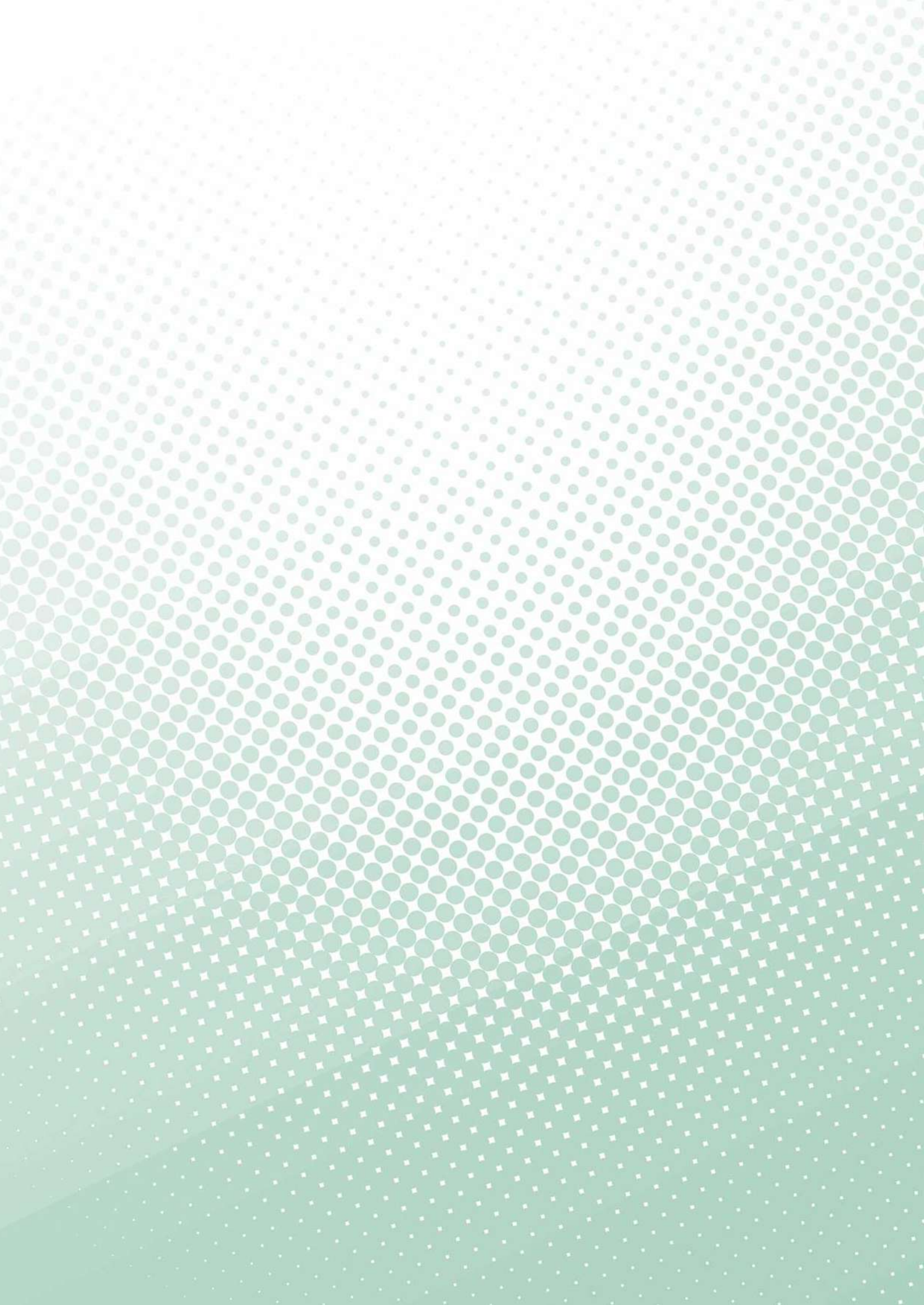
H: 47,5mm
Ø: 106mm
Pack: BX6
ST5



58900/C01-ST5



58900/C02-ST5



Ice

Cream Bowls

Sonia / Flamengo / Quartz



44851

SONIA
C: 29cl - 9¾oz
H: 103mm
Ø: 99mm
Pack: GB6



44854

FLAMENGO
C: 27cl - 9oz
H: 103mm
Ø: 99mm
Pack: GB6



44855

QUARTZ
C: 37,5cl - 12¾oz
H: 99mm
Ø: 117mm
Pack: GB6
MCT6



44854/CR04



44854/CF05





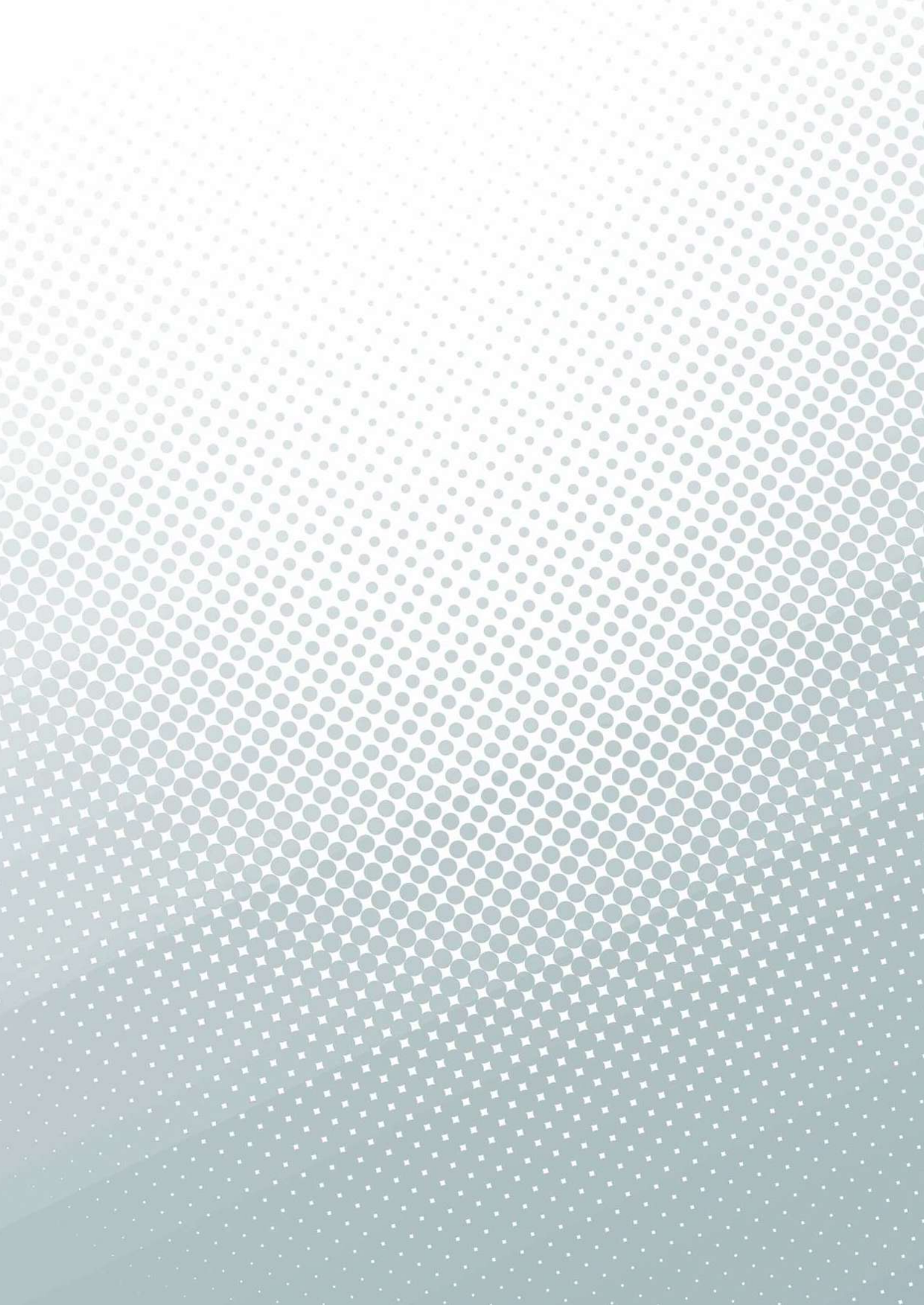
44852

MAROCCO
C: 32cl - 10 $\frac{3}{4}$ oz
H: 175mm
Ø: 83,5mm
Pack: GB6



44853

CHICAGO
C: 22,5cl - 7 $\frac{1}{2}$ oz
H: 130mm
Ø: 98mm
Pack: GB6



Pitchers



39012

C: 1Lt - 33¾oz
H: 185mm
Ø: 120,5mm
Pack: MCT6



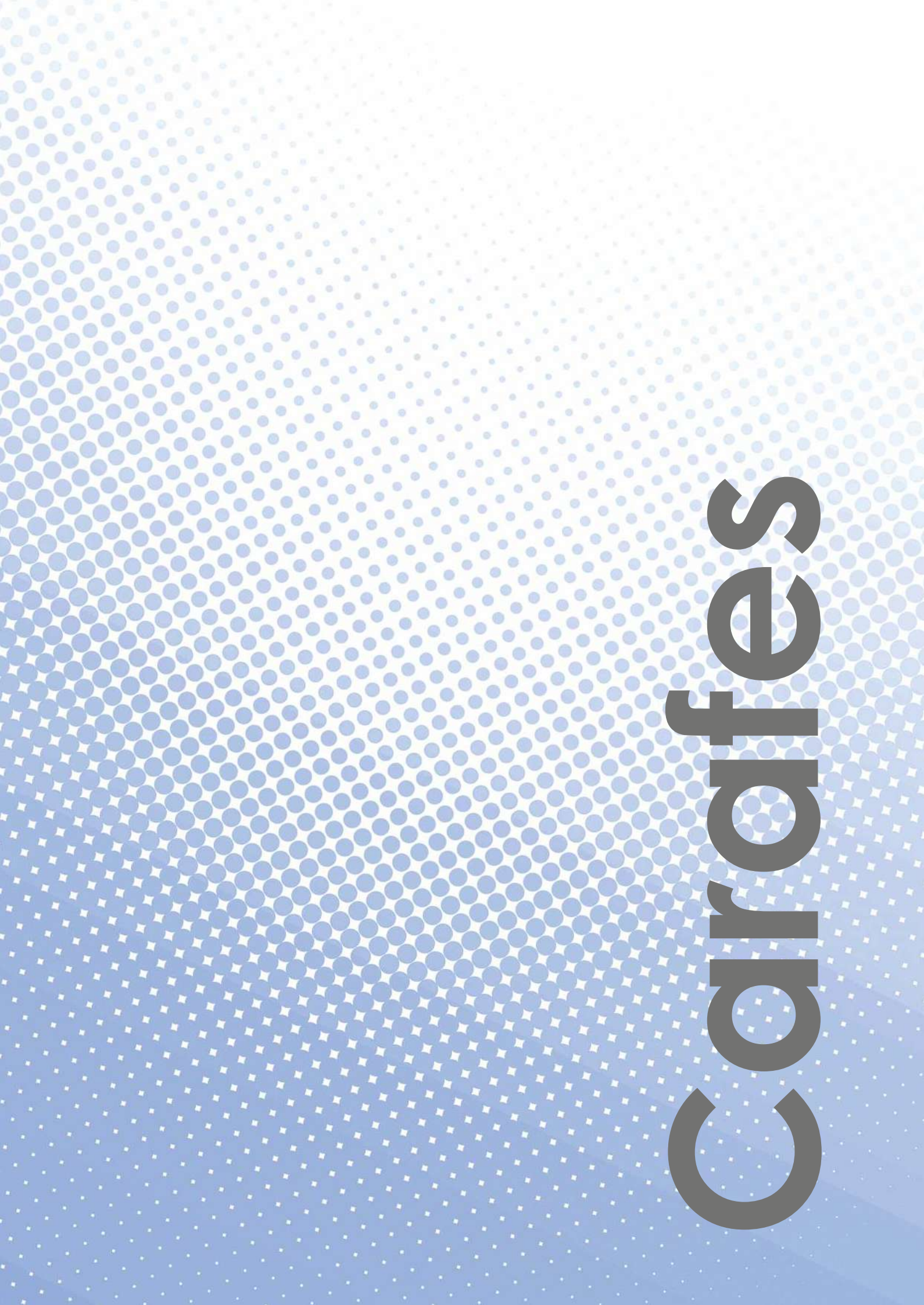
39011

C: 0,5Lt - 17oz
H: 142,5mm
Ø: 97,2mm
Pack: MCT6



39010

C: 0,25Lt - 8½oz
H: 116,5mm
Ø: 80mm
Pack: MCT6



Carrafes

Ossa / Athos



65110

OSSA
C: 1Lt - 33³/₄oz
H: 260mm
Ø: 104mm
Pack: MCT6



65150

OSSA
C: 0,5Lt - 17oz
H: 208mm
Ø: 85mm
Pack: MCT6



65125

OSSA
C: 0,25Lt - 8¹/₂oz
H: 168mm
Ø: 74mm
Pack: MCT6



65310

ATHOS
C: 1Lt - 33³/₄oz
H: 253mm
Ø: 93,5mm
Pack: MCT6



65350

ATHOS
C: 0,5Lt - 17oz
H: 205mm
Ø: 82,7mm
Pack: MCT6



65325

ATHOS
C: 0,25Lt - 8¹/₂oz
H: 173mm
Ø: 67,4mm
Pack: MCT6



65410

EVA
C: 1Lt - 33 $\frac{3}{4}$ oz
H: 248mm
Ø: 101mm
Pack: MCT6

65450

EVA
C: 0,5Lt - 17oz
H: 207mm
Ø: 85mm
Pack: MCT6

65425

EVA
C: 0,25Lt - 8 $\frac{1}{2}$ oz
H: 171mm
Ø: 68mm
Pack: MCT6



65210

OLYMPUS
C: 1Lt - 33 $\frac{3}{4}$ oz
H: 300mm
Ø: 88mm
Pack: MCT6



65250

OLYMPUS
C: 0,5Lt - 17oz
H: 262mm
Ø: 70,2mm
Pack: MCT6



65225

OLYMPUS
C: 0,25Lt - 8 $\frac{1}{2}$ oz
H: 196mm
Ø: 60,8mm
Pack: MCT6



69210
BERLIN
C: 200ml
H: 184mm
Ø: 64,7mm
Pack: MC12



69010
BERLIN
C: 100ml
H: 140mm
Ø: 55mm
Pack: MC24



69510
BERLIN
C: 50ml
H: 108mm
Ø: 44,2mm
Pack: MC24



69220
PARIS
C: 200ml
H: 181,5mm
Ø: 71mm
Pack: MC12



69120
PARIS
C: 100ml
H: 138mm
Ø: 57mm
Pack: MC24



69520
PARIS
C: 50ml
H: 108mm
Ø: 47,8mm
Pack: MC24



Ashtrolys

Selena / Scotch / Octogon



60806

SELENA
H: 36mm
Ø: 140mm
Pack: MC24



60055

SELENA
H: 32mm
Ø: 105mm
Pack: SL2
MC24



60807

SCOTCH
H: 36mm
Ø: 140mm
Pack: MC24



60056

SCOTCH
H: 32mm
Ø: 105mm
Pack: SL2
MC24



60065

OCTOGON
H: 33mm
Ø: 108mm
Pack: MC24



60806 / CF08
BLACK
H: 36mm
Ø: 140mm
Pack: MC24



60806 / CF13
HONEY
H: 36mm
Ø: 140mm
Pack: MC24



60806 / CF05
BLUE
H: 36mm
Ø: 140mm
Pack: MC24



60055 / CF08
BLACK
H: 32mm
Ø: 105mm
Pack: MC24



60056 / CF10
MIRROR SILVER
H: 32mm
Ø: 105mm
Pack: MC24



60056 / CF30
NEW GOLD



60056 / CF20
OLIVE GREEN



60056 / CF31
RED VIOLET



60056 / CF05
BLUE



60056 / CF13
BROWN



60056 / CF24
NEON PINK



60056 / CF02
FULL ORANGE



60056 / CF15
FUCHSIA



60056 / CF26
INK BLUE



60056 / CF29
OLIVE BROWN



60056 / CF21
NEON GREEN



60056 / CF04
VIOLET



60056 / CF01
RED



60056 / CF22
NEON YELLOW



60056 / CF32H
WHITE

Square



60075
SQUARE
H: 27,5mm
Ø: 102mm
Pack: MC24



60075/CF32
WHITE OPAQUE



60075/CF08
BLACK



60075/CF09
FROST

Accessories

Salt & Pepper



21045

MARGARITA
C: 4,5cl - 1½oz
H: 79mm
Ø: 39,6mm
Pack: MC24



36001

ROUND
H: 39mm
Ø: 49mm
Pack: TH12



36002

SQUARE
H: 34mm
Ø: 50,5mm
Pack: TH12



33001

VENDUZ
C: 15cl - 5oz
H: 71mm
Ø: 67,2mm
Pack: MCT6



36001/CB01



36001/CB05



36001/CB08



Jars



22507

ECON ROUND
C: 1,5 L
H: 217 mm
Ø: 133,5 mm
Pack: MCT6



22506

ECON ROUND
C: 1 L
H: 168 mm
Ø: 133,5 mm
Pack: MCT6



22505

ECON ROUND
C: 0,75 L
H: 142,5 mm
Ø: 133,5 mm
Pack: MCT6



22504

ECON ROUND
C: 0,5 L
H: 109 mm
Ø: 133,5 mm
Pack: MCT6



22503

ECON ROUND
C: 350 ml
H: 101 mm
Ø: 133,5 mm
Pack: MCT6



22502

ECON ROUND
C: 200 ml
H: 85 mm
Ø: 111,5 mm
Pack: MCT6



22501

ECON ROUND
C: 125 ml
H: 73 mm
Ø: 111,5 mm
Pack: MCT6

PacKaging

PACKAGING INDEX

Ευρετήριο Συσκευασιών / Списък на опаковки / Index Ambalare / Καταλόγ упаковок

CODE	SALES UNIT	ΜΟΝΑΔΑ ΠΩΛΗΣΗΣ	ΠΡΟΔΑЖНА ΕΔΙΝΙЦΑ	UNITATEA DE VANZARE	ΕΔΙΝΙЦΑ ΠΡΟΔΑЖИ	
 GB	Gift Box	Κουτί Δώρου	Опаковка за подарък	Cutie Cadou	Подарочный пакет	
 BX	Box	Κουτί - Κασετίνα	Κυτία	Cutie	Κορoβκα	
 SL	Sleeve	Θήκη	Οπαοκвка	Cutie Prezentaie	Руκav	
 SV	Sleeve Various Articles	Θήκη Με Διαφορετικά Decor	Οπαοκвка с различни Артикули	Cutie Prezentaie Articole Diferite	Разные товары	
 ST	Set	Σετ	Сервиз	Set	Набор	
 SC	Shrink Wrap-Carton Tray	Τavί Συρρίκνωσης	φoλιo-тavичкa	Tavita Infoliata	Сборное Бумажный поднос	
 MCT	Master Carton	Χαρτοκιβώτιο (Με Κυψέλες ή Νέου Τύπου)	Κашон	Cutie Colectoare	Καρτονная κορoβκα	
 MC	Master Carton	Χαρτοκιβώτιο (Με Κυψέλες ή Νέου Τύπου)	Κашон	Cutie Colectoare	Καρτονная κορoβκα	
 PB	Display Box					
	TRANSPORT PACKAGE	ΣΥΣΚΕΥΑΣΙΑ ΔΙΑΚΙΝΗΣΗΣ	ΟΠΑΟΚВКА ЗА ТРАНСПΟΡΤИΡΑΝЕ	AMBALAJ DE TRANSPORT	ΠΑΚΕΤ ΤΡΑΝСПΟΡΤΙΡΟΒΚИ	
B	Outer Box	Εξωτερικό Χαρτοκιβώτιο	Външен кашон	Cutie de Transport	Наружный пакет	
S	Shrink	Εξωτερική Συρρίκνωση	φoλιo	Infoliat	Сборка	
N	No Outer	Χωρίς Εξωτερική Συσκευασία	Без външен кашон	Fara Cutie de Transport	Без наружного	
	Example: MC12: The goods are sold in a Master Carton (no individual Sales Units) that contains 12 items.	Παράδειγμα: MC12: Τα προϊόντα πωλούνται σε Χαρτοκιβώτιο με Κυψέλες, που περιέχει 12 τεμάχια και όχι ως μεμονωμένες μονάδες πώλησης.	Πριμep: MC 12: Продуктите се продават в кашони (не се продават на е д и н и ч н и бройки) съдържащи 12 броя.	Exemplu: MC12: Produsele sunt vandute intr-o Cutie Colectoare (nu in Unitati de Vanzare individuale) care contine 12 de produse	Например: MC 12: Продукты продаются в большой картонной коробке (без изолированных единиц), содержащая 12 предметов	

Technical

Information

Technical Information

Item Code		Pieces per Master Carton	Unit Barcode	Master Carton Barcode	Master Carton Width (mm)	Master Carton Lenght (mm)	Master Carton Height (mm)	Master Carton Weight - net (kg)	Master Carton Weight - gross (kg)	Pallet Quantity (pcs)	Pallet Height (mm)	Master Carton Cube (cbm)
21045	MC24	24	4820163880556	04820163880549	255	170	90	1,68	-	5.544	1.135	-
22501	SC6	6	4820163882024	04820163881713	174	260	74	1,97	2,09	1.404	1.150	0,0033
22502	SC6	6	4820163882017	04820163881706	174	260	86	2,09	2,21	1.188	1.126	0,0039
22503	MCT6	6	4820163882000	04820163881737	239	348	117	3,08	3,21	540	1.197	0,0097
22504	MCT6	6	4820163881997	04820163881744	239	348	125	3,62	3,76	480	1.144	0,0104
22505	MCT6	6	4820163881966	04820163881720	239	348	159	4,22	4,37	360	1.098	0,0132
22506	MCT6	6	4820163881973	04820163881751	239	348	184	4,62	4,78	300	1.064	0,0153
22507	MCT6	6	4820163881980	04820163881768	243	360	233	5,57	5,74	240	1.076	0,0204
30100	MCT6	6	4820163881461	04820163881478	258	174	146	1,47	-	798	1.208	-
30200	MCT6	6	4820163881508	04820163881515	258	174	146	1,47	-	798	1.208	-
30300	MCT6	6	4820163881485	04820163881492	258	174	146	1,47	-	798	1.208	-
30400	MCT6	6	4820163881522	04820163881539	270	182	136	1,9	-	672	1.138	-
30410	MCT6	6	4820163881553	04820163881546	231	156	156	1,9	-	900	1.116	-
36001	TH12B2	24	3800864030390	23800864030394	263	201	85	2,472	2,743	3.024	744	0,0045
36002	TH12B2	24	3800864030406	23800864030400	263	201	82	3,312	3,387	3.024	716	0,0043
39010	MCT6	6	4820163880044	04820163880297	267	178	122	1,56	-	912	1.168	-
39011	MCT6	6	4820163880051	04820163880303	323	215	148	2,52	-	504	1.222	-
39012	MCT6	6	4820163880068	04820163880310	375	250	190	4,8	-	270	1.124	-
40801	MCT6	6	4820163880099	04820163880341	281	189	160	2,79	-	576	1.140	-
40802	MCT6	6	4820163880075	04820163880327	321	216	186	4,44	-	360	1.139	-
40803	MCT6	6	4820163880082	04820163880334	315	211	176	4,02	-	432	1.276	-
40805	MC12	12	4820163880167	04820163880419	354	265	102	3,42	-	1.080	1.164	-
40806	MC12	12	4820163882956	14820163882953	352	266	116	2,94	3,172	972	1.205	0,0111
40811	MCT6	6	4820163880129	04820163880372	281	189	160	2,79	-	576	1.140	-
40812	MCT6	6	4820163880105	04820163880358	321	216	186	4,44	-	360	1.139	-
40813	MCT6	6	4820163880112	04820163880365	315	211	176	4,02	-	432	1.276	-
40821	MCT6	6	4820163880150	04820163880402	281	189	160	2,79	-	576	1.140	-
40822	MCT6	6	4820163880136	04820163880389	321	216	186	4,44	-	360	1.139	-
40823	MCT6	6	4820163880143	04820163880396	315	211	176	4,02	-	432	1.276	-
44817	BX6B16XB	96	3800864018213	83800864011050	324	169	235	9,168	10,399	4.032	853	0,013
44818	BX6B6XB	36	3800864015052	33800864011048	339	231	152	6,12	6,588	2.376	1.022	0,0115
44819	BX6B6XB	36	3800864030048	33800864009892	387	261	175	8,64	9,244	1.620	1.021	0,0177
44851	GB6B6	36	3800864005374	33800864005375	618	199	335	9,9	11,007	864	1.149	0,0413
44852	GB6B4	24	3800864005381	23800864005385	360	269	368	10,44	11,305	648	1.252	0,03588
44852	MCT6	6	3800864030376	53800864030371	263	180	182	2,61	2,767	684	1.238	0,0087
44853	GB6B4	24	3800864005398	23800864005392	617	418	142	8,04	9,132	672	1.152	0,0372
44854	GB6B6	36	3800864005404	33800864005405	618	200	333	9,9	10,996	864	1.149	0,0415
44855	GB6B4	24	3800864031021	23800864031025	732	229	216	6,84	7,835	600	1.234	0,0366
44855	MCT6	6	3800864031038	53800864031033	364	226	107	1,71	1,903	660	1.227	0,0089
44856	MCT6	6	3800864031120	53800864031125	299	164	153	2,34	2,485	798	1.229	0,0076
44918	GB6B6XB	36	3800864031939	33800864032265	339	231	145	6,48	6,949	2.376	1.022	0,0115
44919	BX6B6XB	36	3800864031991	33800864032272	387	261	174	8,64	9,244	1.620	1.021	0,0177
49001	GB12B6	72	3800864014680	63800864014682	344	258	124	6,624	7,084	5.760	1.146	0,0111
50700	BX6	6	3800864034947	-	214	143	62	0,6	0,657	1.740	766	0,0019
50700	MC72	72	3800864035227	63800864035229	430	288	187	7,2	7,706	2.160	1.086	0,0234
50801	MCT6	6	3800864013713	53800864013718	288	195	140	3,12	3,279	672	1.138	0,008
50802	MCT6	6	3800864010903	53800864010908	351	238	171	4,8	5,04	300	1.032	0,0149
50803	MCT6	6	3800864011535	53800864011530	294	222	157	4,05	4,245	504	1.094	0,0104
50804	MCT6	6	3800864003844	53800864003849	285	194	134	2,67	2,826	768	1.246	0,0076
50805	MCT6	6	3800864013508	53800864013503	306	207	105	2,31	2,47	648	1.149	0,0071
50820	MC12	12	3800864005619	13800864005616	376	286	121	3,48	3,744	768	1.122	0,0132
50821	MC12	12	3800864005732	13800864005739	412	310	107	4,02	4,414	648	1.119	0,0139
50822	MC12	12	3800864005589	13800864005586	384	289	104	2,88	3,14	960	1.197	0,0117
50823	MC12	12	3800864005992	13800864005999	436	326	126	6	6,342	576	1.206	0,0189
50824	MC12	12	3800864037108	13800864037105	364	274	97	3,06	3,292	1.056	1.225	0,0098
50831	MCT6	6	3800864027123	53800864027128	290	198	140	3,54	3,705	672	1.171	0,0084
50832	MCT6	6	3800864027130	53800864027135	320	218	163	5,34	5,542	432	1.134	0,0115
50833	MCT6	6	3800864027512	53800864027517	299	204	152	4,32	4,496	576	1.068	0,0094
50834	MCT6	6	3800864031298	53800864031293	286	192	116	2,25	2,395	768	1.087	0,0065
51019	MC12	12	3800864003080	13800864003087	288	217	107	2,4	2,636	1.512	1.167	0,0071
51019	SL6B8	48	3800864005251	43800864005259	491	286	215	9,6	10,508	1.152	1.047	0,0318
51021	MC12	12	3800864003998	13800864003995	272	205	139	3,257	3,508	1.260	1.164	0,0081
51021	SL6B6	36	3800864006418	33800864006419	383	259	281	9,77	10,559	972	1.007	0,0286
51031	MC12	12	3800864005114	13800864005111	328	247	128	4,14	4,355	960	1.222	0,0109
51031	PB48	48	3800864005114	43800864005112	802	602	124	16,56	17,557	432	1.262	0,06
51032	MC12	12	3800864005213	13800864005210	304	229	127	3,984	4,173	1.248	1.214	0,0093
51032	PB48	48	3800864005213	43800864005211	802	602	123	15,936	16,931	432	1.253	0,0595
51037	MC12	12	3800864003981	13800864003988	284	214	149	3,84	4,018	1.260	1.196	0,0092
51037	SL6B8	48	3800864003011	43800864003019	481	306	296	15,36	16,499	864	1.052	0,0446
51050	SL6B6	36	3800864000058	33800864000059	381	270	276	10,26	11,075	1.296	1.275	0,0291
51051	SL6B6	36	3800864000072	33800864000073	381	270	276	10,26	11,075	1.296	1.275	0,0291
51052	SL6B6	36	3800864000102	33800864000103	381	270	276	10,26	11,075	1.296	1.275	0,0291
51053	SL6B6	36	3800864000119	33800864000110	381	270	276	10,26	11,075	1.296	1.275	0,0291
51054	SL6B6	36	3800864000133	33800864000134	381	270	276	10,26	11,075	1.296	1.275	0,0291
51055	SL6B6	36	3800864000140	33800864000141	381	270	276	10,26	11,075	1.296	1.275	0,0291
51056	SL6B6	36	3800864000157	33800864000158	381	270	276	10,26	11,075	1.296	1.275	0,0291
51057	SL6B6	36	3800864000164	33800864000165	381	270	276	10,26	11,075	1.296	1.275	0,0291
51058	SL6B6	36	3800864000171	33800864000172	381	270	276	10,26	11,075	1.296	1.275	0,0291

Item Code	MC	Pieces per		Master Carton Barcode	Master Carton Width (mm)	Master Carton Length (mm)	Master Carton Height (mm)	Master Carton Weight - net (kg)	Master Carton Weight - gross (kg)	Pallet Quantity (pcs)	Pallet Height (mm)	Master Carton Cube (cbm)
		Master Carton	Unit Barcode									
51070	MC12	12	3800864005497	13800864005494	288	217	165	4,5	4,801	1.008	1.174	0,0108
51071	MC12	12	3800864005503	13800864005500	308	232	165	5,16	5,49	864	1.174	0,0123
51072	MC12	12	3800864010354	13800864010351	308	232	165	4,8	5,013	864	1.174	0,0123
51150	SL6B6	36	3800864017032	33800864017033	381	270	276	10,26	11,075	1.296	1.275	0,0291
51151	SL6B6	36	3800864017049	33800864017040	381	270	276	10,26	11,075	1.296	1.275	0,0291
51152	SL6B6	36	3800864017056	33800864017057	381	270	276	10,26	11,075	1.296	1.275	0,0291
51153	SL6B6	36	3800864017568	33800864017569	381	270	276	10,26	11,075	1.296	1.275	0,0291
51154	SL6B6	36	3800864028946	33800864028947	381	270	276	10,26	11,075	1.296	1.275	0,0291
51155	SL6B6	36	3800864028953	33800864028954	381	270	276	10,26	11,075	1.296	1.275	0,0291
51500	MC12	12	3800864027925	13800864027922	296	223	156	5,34	5,642	1.008	1.120	0,0108
51500	SL3B10	30	3800864027918	23800864027912	373	271	312	13,35	14,295	810	1.100	0,0323
51511	GB6B4	24	3800864033452	23800864033456	356	263	330	13,32	14,113	648	1.140	0,0312
51511	MC12	12	3800864033469	13800864033466	348	262	163	6,66	7,04	720	1.130	0,015
52037	MC12	12	3800864035241	13800864035248	372	280	183	7,38	7,676	576	1.250	0,0192
52080	MC12	12	3800864030277	13800864030274	332	250	132	4,5	4,816	960	1.210	0,0111
52081	MC12	12	3800864030697	13800864030694	332	250	132	4,44	4,756	960	1.210	0,0111
52081	SL3B10	30	3800864030789	23800864030783	449	306	265	11,1	12,163	720	1.209	0,0367
52082	MC12	12	3800864030703	13800864030700	332	250	132	4,44	4,756	960	1.210	0,0111
52082	SL3B10	30	3800864030796	23800864030790	449	306	265	11,1	12,163	720	1.209	0,0367
52083	MC12	12	3800864031588	13800864031585	332	250	132	4,44	4,658	960	1.210	0,0111
52083	SL3B10	30	3800864031595	23800864031599	449	306	265	11,1	12,163	720	1.209	0,0367
53008	MC12	12	3800864004001	13800864004008	312	235	90	2,58	2,824	1.584	1.208	0,0071
53037	MC12	12	3800864004018	13800864004015	324	244	92	3	3,254	1.584	1.170	0,0074
53037	SL6B6	36	3800864000331	33800864000332	426	346	188	9	9,886	1.080	1.091	0,028
53038	MC12	12	3800864035388	13800864035385	340	256	99	3	3,208	1.200	1.147	0,0088
53047	MC12	12	3800864004025	13800864004022	308	232	149	4,38	4,585	1.008	1.234	0,0112
53047	SL6B6	36	3800864000362	33800864000363	406	336	301	13,14	14,165	648	1.067	0,0421
53050	SL6B6	36	3800864004650	33800864004651	479	296	196	8,82	9,701	1.080	1.157	0,0288
53051	SL6B6	36	3800864004667	33800864004668	479	296	196	8,82	9,701	1.080	1.157	0,0288
53052	SL6B6	36	3800864004674	33800864004675	479	296	196	8,82	9,701	1.080	1.157	0,0288
53053	SL6B6	36	3800864004681	33800864004682	479	296	196	8,82	9,701	1.080	1.157	0,0288
53054	SL6B6	36	3800864004698	33800864004699	479	296	196	8,82	9,701	1.080	1.157	0,0288
53055	SL6B6	36	3800864004704	33800864004705	479	296	196	8,82	9,701	1.080	1.157	0,0288
53056	SL6B6	36	3800864004711	33800864004712	479	296	196	8,82	9,701	1.080	1.157	0,0288
53057	SL6B6	36	3800864004728	33800864004729	479	296	196	8,82	9,701	1.080	1.157	0,0288
53058	SL6B6	36	3800864004735	33800864004736	479	296	196	8,82	9,701	1.080	1.157	0,0288
53060	MC12	12	3800864035258	13800864035255	364	274	105	3,6	3,923	864	1.101	0,0106
53061	MC12	12	3800864035180	13800864035187	364	274	105	2,94	3,263	864	1.101	0,0106
53061	SL3B10	30	3800864035371	23800864035375	461	316	213	7,35	8,341	750	1.216	0,0313
53062	MC12	12	3800864035166	13800864035163	364	274	105	2,94	3,263	864	1.101	0,0106
53062	SL3B10	30	3800864035364	23800864035368	461	316	213	7,35	8,341	750	1.216	0,0313
53070	MC12	12	3800864005510	13800864005517	364	274	105	3,6	3,923	864	1.101	0,0106
53080	MC12	12	3800864035265	13800864035262	340	256	97	3,66	3,867	1.320	1.225	0,0086
53080	SL3B10	30	3800864035418	23800864035412	456	331	196	9,15	10,139	750	1.131	0,0298
53081	MC12	12	3800864035272	13800864035279	340	256	97	3,72	3,927	1.320	1.225	0,0086
53081	SL3B10	30	3800864035425	23800864035429	456	331	196	9,3	10,289	750	1.131	0,0298
53082	MC12	12	3800864035289	13800864035286	340	256	97	3,72	3,927	1.320	1.225	0,0086
53082	SL3B10	30	3800864035432	23800864035436	456	331	196	9,3	10,289	750	1.131	0,0298
53083	MC12	12	3800864035296	13800864035293	340	256	97	3,72	3,927	1.320	1.225	0,0086
53083	SL3B10	30	3800864035449	23800864035443	456	331	196	9,3	10,289	750	1.131	0,0298
53150	SL6B6	36	3800864029738	33800864029739	479	296	196	8,82	9,701	1.080	1.157	0,0288
53154	SC12B4	48	3800864000386	43800864000384	463	299	209	10,8	11,707	1.440	1.222	0,0299
53156	MC12	12	3800864026942	13800864026949	268	202	131	2,94	3,178	1.728	1.246	0,0075
53156	SC12B4	48	3800864000393	43800864000391	386	248	260	11,76	12,497	1.728	1.189	0,0251
53173	MC12	12	3800864008801	13800864008808	296	223	131	3,3	3,483	1.344	1.246	0,0091
53177	MC12	12	3800864000430	13800864000437	376	283	137	4,92	5,306	672	1.112	0,0147
53187	MC12	12	3800864004032	13800864004039	304	229	88	2,22	2,452	1.716	1.186	0,0066
53203	MC12	12	3800864004056	13800864004053	316	236	158	4,32	4,536	864	1.132	0,0123
53203	SL3B10	30	3800864008429	23800864008423	396	273	319	10,8	11,801	810	1.121	0,0353
53258	SL6B8	48	3800864000645	43800864000643	521	331	240	12,72	14,001	768	1.131	0,0426
53300	MC12	12	3800864004063	13800864004060	336	264	96	3,36	3,575	1.200	1.171	0,0091
53300	SL3B10	30	3800864007167	23800864007167	469	308	193	8,4	9,34	750	1.142	0,0289
53301	MC12	12	3800864000683	13800864000680	336	264	96	3,36	3,572	1.200	1.117	0,0087
53301	SL3B10	30	3800864007187	23800864007181	469	308	193	8,4	9,34	750	1.142	0,0289
53302	MC12	12	3800864000706	13800864000703	336	264	96	3,36	3,572	1.200	1.117	0,0087
53302	SL3B10	30	3800864007194	23800864007198	469	308	193	8,4	9,34	750	1.142	0,0289
53303	MC12	12	3800864000720	13800864000727	320	241	144	4,5	4,814	1.008	1.161	0,0112
53303	SL3B10	30	3800864000713	23800864000717	438	303	296	11,25	12,343	540	1.036	0,0395
53304	SL3B10	30	3800864007125	23800864007129	438	303	296	11,25	12,332	540	1.036	0,0395
53305	SL3B10	30	3800864007132	23800864007136	438	303	296	11,25	12,332	540	1.036	0,0395
53309	MC12	12	3800864004087	13800864004084	336	264	96	3,36	3,575	1.200	1.171	0,0091
53309	SL3B10	30	3800864007200	23800864007204	469	308	193	8,4	9,34	750	1.142	0,0289
53310	MC12	12	3800864000867	13800864000864	336	264	96	3,36	3,572	1.200	1.117	0,0087
53310	SL3B12	36	3800864007217	33800864007218	396	300	290	10,08	11,126	864	1.034	0,0353
53313	MC12	12	3800864004117	13800864004114	320	241	144	4,5	4,712	1.008	1.161	0,0112
53313	SL3B10	30	3800864007149	23800864007143	438	303	296	11,25	12,332	540	1.036	0,0395
53314	SL3B10	30	3800864007156	23800864007150	438	303	296	11,25	12,343	540	1.036	0,0395
53360	MC12	12	3800864036767	13800864036764	320	241	144	4,14	4,352	1.008	1.161	0,0112
53361	MC12	12	3800864035302	13800864035309	320	241	144	4,02	4,232	1.008	1.161	0,0112
53361	SL3B10	30	3800864035340	23800864035344	436	299	293	10,05	11,123	540	1.027	0,0384
53362	MC12	12	3800864035173	13800864035170	320	241	144	4,02	4,232	1.008	1.161	0,0112
53362	SL3B10	12	3800864035357	23800864035351	436	299	293	10,05	11,123	540	1.027	0,0384
53401	MC12	12	3800864005107	13800864005104	308	232	102	3,54	3,72	1.560	1.231	0,0078

Item Code		Pieces per		Master Carton Barcode	Master Carton Width (mm)	Master Carton Length (mm)	Master Carton Height (mm)	Master Carton Weight - net (kg)	Master Carton Weight - gross (kg)	Pallet Quantity (pcs)	Pallet Height (mm)	Master Carton Cube (cbm)
		Master Carton	Unit Barcode									
53402	MC12	12	3800864031601	13800864031608	332	250	102	3,54	3,741	1.200	1.177	0,0086
53500	MC12	12	3800864027840	13800864027847	344	259	99	4,32	4,608	1.200	1.147	0,009
53500	SL3B10	30	3800864027932	23800864027936	431	300	200	10,8	11,676	900	1.177	0,0268
53500	GB6B6	36	3800864030901	33800864030902	376	278	342	14,94	15,941	864	1.176	0,036
53511	GB6B6	36	3800864033476	33800864033477	376	278	342	13,32	14,321	864	1.176	0,036
53511	MC12	12	3800864033483	13800864033480	368	277	113	4,44	4,78	864	1.173	0,0117
53520	MC12	12	3800864031304	13800864031301	356	268	107	5,16	5,475	1.080	1.227	0,0104
54008	MC12	12	3800864003776	13800864003773	292	220	87	2,28	2,437	1.848	1.175	0,006
54026	MC48	48	3800864002977	43800864002975	358	248	264	10,8	11,108	1.920	1.227	0,0241
54035	MC72	72	3800864003103	63800864003105	409	274	271	12,24	12,605	2.304	1.233	0,0306
54035	SL6B8	48	3800864004490	43800864004498	448	296	189	8,16	8,971	1.440	1.122	0,026
54047	MC12	12	3800864001000	13800864001007	276	208	83	1,98	2,176	2.160	1.220	0,0052
54047	SL6B8	48	3800864000997	43800864000995	481	321	171	7,92	8,796	1.440	1.210	0,0275
54050	SL6B6	36	3800864001017	33800864001018	386	271	174	5,4	5,96	1.944	1.228	0,0189
54051	SL6B6	36	3800864001024	33800864001025	386	271	174	5,4	5,96	1.944	1.228	0,0189
54052	SL6B6	36	3800864001031	33800864001032	386	271	174	5,472	6,032	1.944	1.228	0,0189
54053	SL6B6	36	3800864001048	33800864001049	386	271	174	5,4	5,96	1.944	1.228	0,0189
54054	SL6B6	36	3800864001055	33800864001056	386	271	174	5,4	5,96	1.944	1.228	0,0189
54055	SL6B6	36	3800864001062	33800864001063	386	271	174	5,4	5,96	1.944	1.228	0,0189
54056	SL6B6	36	3800864001079	33800864001070	386	271	174	5,4	5,96	1.944	1.228	0,0189
54057	SL6B6	36	3800864001086	33800864001087	386	271	174	5,4	5,96	1.944	1.228	0,0189
54058	SL6B6	36	3800864001093	33800864001094	386	271	174	5,4	5,96	1.944	1.228	0,0189
54070	MC12	12	3800864005527	13800864005524	326	246	88	2,58	2,832	1.440	1.216	0,0072
54110	MC12	12	3800864017216	13800864017213	274	206	86	1,5	1,691	1.980	1.104	0,0049
54110	SC12B4	48	3800864001116	43800864001114	385	244	170	6	6,618	2.592	1.204	0,0166
54151	SL6B6	36	3800864017063	33800864017064	388	258	217	6,84	7,08	1.620	1.252	0,0222
54153	SL6B6	36	3800864017070	33800864017071	388	258	217	6,84	7,08	1.620	1.252	0,0222
54158	MC12	12	3800864013614	13800864013611	266	201	98	1,98	2,12	2.160	1.191	0,0056
54158	SL6B8	48	3800864001123	43800864001121	451	291	196	7,92	8,723	1.440	1.158	0,0267
54158	MC48	48	3800864013614	43800864013612	395	265	188	7,92	8,217	2.160	1.117	0,0204
54162	MC48	48	3800864004131	43800864004139	386	266	168	7,2	7,481	2.592	1.192	0,018
54170	SL6B6	36	3800864014031	33800864014032	386	256	214	6,84	7,379	1.620	1.248	0,0219
54173	MC12	12	3800864007521	13800864007528	291	219	107	2,28	2,519	1.512	1.167	0,0073
54173	MC48	48	3800864007521	43800864007529	436	291	209	9,12	9,48	1.440	1.223	0,0274
54173	SL6B6	36	3800864001147	33800864001148	386	256	214	6,84	7,379	1.620	1.248	0,0219
54174	SL6B6	36	3800864014017	33800864014018	386	256	214	6,84	7,379	1.620	1.248	0,0219
54178	SL6B6	36	3800864014024	33800864014025	386	256	214	6,84	7,379	1.620	1.248	0,0219
54179	SL6B6	36	3800864001178	33800864001179	386	256	214	6,84	7,379	1.620	1.248	0,0219
54187	MC12	12	3800864014697	13800864014694	276	215	84	1,74	1,884	2.160	1.168	0,0051
54303	MC12	12	3800864007859	13800864007856	286	228	86	2,34	2,561	2.016	1.256	0,0061
54303	SL3B12	36	3800864007842	33800864007843	500	300	178	7,02	7,939	1.080	1.067	0,0278
54304	SL3B12	36	3800864007750	33800864007751	500	300	178	7,02	7,939	1.080	1.067	0,0278
54305	SL3B12	36	3800864007767	33800864007768	500	300	178	7,02	7,939	1.080	1.067	0,0278
54313	MC12	12	3800864007866	13800864007863	286	228	86	2,34	2,501	2.016	1.256	0,0061
54313	SL3B12	36	3800864007774	33800864007775	500	300	178	7,02	7,939	1.080	1.067	0,0278
54314	SL3B12	36	3800864007781	33800864007782	500	300	178	7,02	7,939	1.080	1.067	0,0278
55006	MC72	72	3800864003684	63800864003686	391	261	256	9,792	10,126	2.592	1.295	0,0269
55006	SL6B8	48	3800864004506	43800864004504	399	290	173	6,528	7,253	2.304	1.190	0,0202
55018	MC72	72	3800864003226	63800864003228	388	260	253	9	9,329	2.592	1.183	0,0263
55018	SC6B12	72	3800864003196	63800864003198	348	238	255	9	9,819	2.880	1.191	0,0217
55026	SC12B4	48	3800864003097	43800864003095	386	248	156	6,24	6,84	2.592	1.120	0,0156
55100	MC48	48	3800864008719	43800864008717	406	271	143	5,28	5,559	3.024	1.192	0,0165
55600	MC12	12	3800864027154	13800864027151	346	260	65	2,16	2,411	1.872	1.291	0,0065
55600	MC48	48	3800864027154	43800864027152	346	261	248	8,64	9,14	1.920	1.163	0,0231
56018	MC96	96	3800864005237	83800864005233	391	296	141	4,992	5,285	6.144	1.262	0,0162
56018	SC12B12	144	3800864005244	93800864005247	341	271	196	7,488	8,036	7.200	1.158	0,0188
56031	MC96	96	3800864005220	83800864005226	391	296	141	7,2	7,495	6.144	1.282	0,0165
56032	MC96	96	3800864000089	83800864000085	391	296	141	10,56	10,853	6.144	1.262	0,0162
56032	SL6B12	72	3800864009969	63800864009961	392	281	143	7,92	8,608	4.032	1.154	0,0159
56037	MC96	96	3800864000010	83800864000016	426	321	126	9,12	9,452	4.608	1.206	0,0182
56037	SL6B16	96	3800864001208	83800864001204	450	345	123	9,12	9,992	4.608	1.138	0,0193
56070	MC96	96	3800864005534	83800864005530	391	296	141	7,68	7,973	6.144	1.262	0,0162
56087	MC96	96	3800864009143	83800864009149	398	300	154	7,008	7,323	4.608	1.108	0,0192
56088	MC96	96	3800864005183	83800864005189	398	300	154	9,6	9,915	4.608	1.108	0,0192
56088	SL6B16	96	3800864005176	83800864005172	356	331	154	9,6	10,302	3.456	1.108	0,019
56089	MC96	96	3800864015182	83800864015188	398	300	154	13,248	13,563	4.608	1.108	0,0192
56099	MC96	96	3800864001246	83800864001242	391	296	141	8,64	8,933	6.144	1.262	0,0162
56106	MC96	96	3800864008092	83800864008098	391	296	144	9,12	9,42	5.376	1.199	0,0175
56108	MC96	96	3800864006388	83800864006384	426	321	126	6,24	6,572	4.608	1.206	0,0182
56108	SC12B8	96	3800864000065	83800864000061	350	270	116	6,24	6,836	7.776	1.248	0,0116
56109	MC96	96	3800864010552	83800864010558	426	321	126	5,76	6,092	4.608	1.206	0,0182
56109	SC12B8	96	3800864001253	83800864001259	329	259	114	5,76	6,293	8.640	1.230	0,0103
56116	MC24	24	3800864027802	23800864027806	274	184	112	3	3,205	2.160	711	0,0057
56116	MC96	96	3800864027802	83800864027808	364	274	221	12	12,488	2.592	811	0,0222
56119	MC96	96	3800864036538	83800864036534	391	296	141	5,76	6,055	6.144	1.287	0,0166
56119	SC12B8	96	3800864036835	83800864036831	372	280	126	5,76	6,4	6.144	1.162	0,0133
56132	MC24	24	3800864035210	23800864035214	301	202	90	3,48	3,625	2.688	788	0,0056
56132	MC72	72	3800864035210	63800864035212	301	202	263	10,44	10,669	4.608	1.200	0,0161
56132	SL6B12	72	3800864035401	63800864035403	372	282	182	10,44	11,184	1.728	694	0,0193
56137	MC24	24	3800864036347	63800864036341	262	176	92	2,16	2,276	3.192	802	0,0043
56137	SL6B12	72	3800864036354	63800864036356	365	229	184	6,48	7,081	2.880	885	0,0155
56188	MC24	24	3800864035319	23800864035313	322	216	97	3	3,166	1.728	734	0,0069
56188	SL6B16	96	3800864035456	83800864035452	409	354	194	12	13,022	1.728	730	0,0283

Item Code	Pieces per Master Carton	Unit Barcode	Master Carton Barcode	Master Carton Width (mm)	Master Carton Length (mm)	Master Carton Height (mm)	Master Carton Weight - net (kg)	Master Carton Weight - gross (kg)	Pallet Quantity (pcs)	Pallet Height (mm)	Master Carton Cube (cbm)	
58124	BX6B16XB	96	3800864030680	83800864011067	260	134	170	4,992	5,413	7.776	658	0,006
58125	BX6B6XB	36	3800864030413	33800864009908	296	198	131	3,6	3,952	4.032	1.070	0,0078
58126	BX6B6XB	36	3800864030055	33800864009915	444	298	191	13,14	13,947	1.080	1.106	0,0255
58127	BX6B4XB	24	3800864030062	23800864009925	360	358	222	14,64	15,476	576	1.037	0,0288
58228	BX6B2XB	12	3800864034862	13800864032308	460	233	255	12,72	13,382	336	1.169	0,0275
58900C01	ST5B4	20	3800864032165	13800864032162	458	232	246	10,08	10,876	560	1.133	0,0263
58900C02	ST5B4	20	3800864032677	13800864032674	458	232	246	10,08	10,876	560	1.133	0,0263
58926	BX6B6XB	36	3800864032035	33800864032289	444	298	191	13,05	14,307	1.080	1.106	0,0255
58927	BX6B4XB	24	3800864031977	23800864032299	360	358	222	15,36	16,195	576	1.037	0,0288
58928	BX6B2XB	12	3800864032141	13800864032339	460	233	255	13,02	13,682	336	1.169	0,0275
60055	MC24	24	3800864001277	23800864001271	330	301	112	5,76	6,019	1.344	856	0,0118
60055	SL2B12	24	3800864003059	23800864003053	280	220	211	5,76	6,365	1.344	1.015	0,0134
60056	MC24	24	3800864001284	23800864001288	330	301	112	5,76	6,019	1.344	856	0,0118
60065	MC24	24	3800864004476	23800864004470	346	296	116	6,48	6,743	1.344	880	0,0126
60065	SL2B12	24	3800864004520	23800864004524	286	231	221	6,48	7,123	1.344	1.055	0,0151
60075	MC24	24	3800864031311	23800864031315	321	248	110	6,84	7,04	2.376	1.146	0,0089
60806	MC24	24	3800864001345	23800864001349	436	321	148	11,52	11,872	1.008	1.227	0,0217
60807	MC24	24	3800864001352	23800864001356	436	321	148	11,52	11,872	1.008	1.227	0,0217
65110	MCT6	6	4820163880211	04820163880471	318	214	267	4,08	-	288	1.236	-
65125	MCT6	6	4820163880198	04820163880457	228	154	175	1,92	-	900	1.230	-
65150	MCT6	6	4820163880204	04820163880464	261	176	215	3,3	-	570	1.249	-
65210	MCT6	6	4820163880273	04820163880532	270	182	307	4,5	-	288	1.083	-
65225	MCT6	6	4820163880259	04820163880518	189	128	203	1,92	-	1.080	1.189	-
65250	MCT6	6	4820163880266	04820163880525	217	147	269	3,42	-	624	1.244	-
65310	MCT6	6	4820163880280	04820163880440	287	193	260	4,08	-	384	1.188	-
65325	MCT6	6	4820163880174	04820163880426	208	141	180	1,92	-	1.044	1.260	-
65350	MCT6	6	4820163880181	04820163880433	254	172	212	3,3	-	570	1.234	-
65410	MCT6	6	4820163880242	04820163880501	294	198	255	4,08	-	384	1.188	-
65425	MCT6	6	4820163880228	04820163880488	186	126	178	1,92	-	1.080	1.064	-
65450	MCT6	6	4820163880235	04820163880495	236	160	214	3,3	-	720	1.244	-
69010	MC24	24	4820163881171	04820163880600	332	222	142	2,88	-	1.680	1.180	-
69120	MC24	24	4820163881201	04820163880570	345	230	140	2,88	-	1.680	1.166	-
69210	MC12	12	4820163881164	04820163880617	261	197	186	2,28	-	1.020	1.084	-
69220	MC12	12	4820163881195	04820163880587	286	216	184	2,28	-	840	1.094	-
69510	MC24	24	4820163881188	04820163880594	269	179	110	1,68	-	-	-	-
69520	MC24	24	4820163881218	04820163880563	290	194	110	1,68	-	3.456	1.188	-
87300	ST18	18	3800864004889	-	261	175	283	4,08	4,315	1.134	1.018	0,0131
87301	ST18	18	3800864004896	-	261	175	283	4,08	4,315	1.134	1.018	0,0131
87302	ST18	18	3800864004902	-	261	175	283	4,08	4,315	1.134	1.018	0,0131
87303	ST18	18	3800864004919	-	261	175	283	4,08	4,315	1.134	1.018	0,0131
87304	ST18	18	3800864004926	-	261	175	283	4,08	4,315	1.134	1.018	0,0131
87305	ST18	18	3800864004933	-	261	175	283	4,08	4,315	1.134	1.018	0,0131
87306	ST18	18	3800864004940	-	261	175	283	4,08	4,315	1.134	1.018	0,0131
87307	ST18	18	3800864004957	-	261	175	283	4,08	4,315	1.134	1.018	0,0131
87308	ST18	18	3800864004964	-	261	175	283	4,08	4,315	1.134	1.018	0,0131
87450	ST12	12	3800864004971	-	223	150	188	2,61	2,902	1.560	1.101	0,0062
87451	ST12	12	3800864004988	-	223	150	188	2,61	2,902	1.560	1.101	0,0062
87452	ST12	12	3800864004995	-	223	150	188	2,61	2,902	1.560	1.101	0,0062
87453	ST12	12	3800864005008	-	223	150	188	2,61	2,902	1.560	1.101	0,0062
87454	ST12	12	3800864005015	-	223	150	188	2,61	2,902	1.560	1.101	0,0062
87455	ST12	12	3800864005022	-	223	150	188	2,61	2,902	1.560	1.101	0,0062
87456	ST12	12	3800864005039	-	223	150	188	2,61	2,902	1.560	1.101	0,0062
87457	ST12	12	3800864005046	-	223	150	188	2,61	2,902	1.560	1.101	0,0062
87458	ST12	12	3800864005053	-	223	150	188	2,61	2,902	1.560	1.101	0,0062
91002	MC12	12	3800864030987	13800864030984	370	278	117	2,22	2,471	864	1.209	0,0122
91002	SL3B8	24	3800864032387	23800864032381	622	188	234	4,44	5,269	768	1.085	0,0276
91010	MC12	12	3800864003851	13800864003858	336	253	113	2,58	2,883	1.080	1.221	0,0102
91010	SL6B6	36	3800864003868	33800864003869	423	351	226	7,74	8,691	864	1.075	0,0346
91012	GB6B6	36	3800864030666	33800864030667	376	278	339	4,86	5,879	864	1.167	0,0357
91012	MC12	12	3800864029370	13800864029377	368	277	112	1,62	1,87	864	1.212	0,0121
91012	SL3B8	24	3800864032196	23800864032190	612	188	226	3,24	4,039	768	1.053	0,0262
91100	MC12	12	3800864003462	13800864003469	248	187	168	3,3	3,55	1.368	1.192	0,0081
91200	MC12	12	3800864003660	13800864003667	256	193	150	3,54	3,782	1.596	1.241	0,0078
91203	MC12	12	3800864003929	13800864003926	248	187	159	3,42	3,57	1.440	1.138	0,0077
91206	MC12	12	3800864001468	13800864001465	259	196	145	2,64	2,882	1.512	1.206	0,0077
91206	SL6B8	48	3800864003875	43800864003873	461	268	288	10,56	11,491	1.008	1.028	0,0365
91210	MC12	12	3800864009402	13800864009409	262	198	168	3,78	3,948	1.296	1.192	0,0091
91210	SL3B12	36	3800864001482	33800864001483	396	235	338	11,34	12,344	1.080	1.162	0,0317
91230	GB6B6	36	3800864006814	33800864006815	402	204	308	9	9,72	1.296	1.074	0,0255
91230	SL3B12	36	3800864001550	33800864001551	396	250	302	9	9,931	972	1.070	0,0306
91400	MC12	12	3800864003653	13800864003650	232	175	150	2,88	3,012	1.848	1.241	0,0064
91402	MC12	12	3800864004537	13800864004534	224	169	159	2,7	2,829	1.728	1.138	0,0063
91404	MC12	12	3800864031144	13800864031141	252	190	155	2,82	2,97	1.596	1.238	0,0075
91500	MC12	12	3800864001611	13800864001618	289	218	151	3,24	3,426	1.176	1.248	0,01
91500	SL3B8	24	3800864009303	23800864009307	283	279	301	6,48	7,242	864	1.067	0,0244
91502	GB6B6	36	3800864001628	33800864001629	543	269	356	6,48	7,693	648	1.218	0,0524
91502	MC12	12	3800864004148	13800864004145	344	259	167	2,16	2,412	720	1.154	0,015
91502	SC6B4	24	3800864001635	23800864001639	334	256	334	4,32	5,066	720	1.150	0,0287
91503	GB6B4	24	3800864004780	23800864004784	376	271	391	5,04	5,97	432	930	0,0401
91503	MC12	12	3800864004155	13800864004152	344	259	187	2,52	2,927	600	1.086	0,0168
91503	SC6B4	24	3800864012143	23800864012147	353	266	370	5,04	5,902	432	887	0,0349
91504	GB6B4	24	3800864004759	23800864004753	343	256	364	5,88	6,668	720	1.256	0,0326
91504	MC12	12	3800864004162	13800864004169	324	244	176	2,94	3,177	864	1.240	0,0145

Item Code		Pieces per		Master Carton Barcode	Master Carton Width (mm)	Master Carton Length (mm)	Master Carton Height (mm)	Master Carton Weight - net (kg)	Master Carton Weight - gross (kg)	Pallet Quantity (pcs)	Pallet Height (mm)	Master Carton Cube (cbm)
		Master Carton	Unit Barcode									
91507	BX6	6	3800864020636	-	260	175	203	1,26	1,389	570	1.162	0,0093
91508	BX6	6	3800864020643	-	270	181	218	1,86	2,002	570	1.251	0,0108
91512	GB6B6	36	3800864029233	33800864029234	543	276	451	9	10,408	432	1.049	0,0679
91512	MC12	12	3800864028342	13800864028349	360	271	223	3	3,491	432	1.063	0,0225
91512	SC6B6	36	3800864030918	33800864030919	543	276	444	9	10,4	432	1.035	0,0669
91516	BX6	6	3800864034381	-	289	193	234	1,59	1,822	384	1.083	0,0131
91517	BX6	6	3800864027963	-	281	188	209	1,65	1,797	480	1.206	0,0112
91550	MC12	12	3800864008566	13800864008563	356	268	161	4,512	4,778	648	1.150	0,016
91550	SL3B10	30	3800864008603	23800864008607	446	301	326	11,28	12,458	540	1.142	0,0448
91600	MC12	12	3800864003936	13800864003933	272	205	164	3,288	3,566	1.224	1.168	0,0095
91600	SL3B8	24	3800864001659	23800864001653	286	236	333	6,576	7,285	1.008	1.163	0,023
91701	GB6B6	36	3800864004575	33800864004576	402	204	308	9	9,719	1.296	1.072	0,0254
91701	SL3B12	36	3800864001710	33800864001711	384	246	303	9	9,929	972	1.073	0,0293
91702	GB6B8	48	3800864006692	43800864006690	578	218	308	12	13,47	1.008	1.072	0,0391
91702	SL6B6	36	3800864001741	33800864001742	382	289	300	9	9,845	864	1.064	0,0339
91704	SL3B12	36	3800864001789	33800864001780	420	274	301	9	9,995	864	1.067	0,0355
91705	SL3B12	36	3800864001796	33800864001797	404	257	298	9	9,966	972	1.058	0,0317
91706	SL3B12	36	3800864001819	33800864001810	436	279	309	11,52	12,627	648	1.091	0,0385
91800	SL6B6	36	3800864001840	33800864001841	411	346	291	9	10,007	648	1.037	0,0424
91805	MC48	48	3800864001888	43800864001886	446	306	311	13,68	14,139	864	1.097	0,0434
91805	SL3B10	30	3800864001871	23800864001875	374	257	314	8,55	9,469	810	1.090	0,0304
91810	SL3B10	30	3800864031465	23800864031469	369	259	310	7,8	8,704	810	1.078	0,0298
91810	SL6B8	48	3800864031458	43800864031456	510	289	310	12,48	13,647	864	1.078	0,046
91900	GB6	6	3800864007019	-	235	164	140	1,8	1,932	1.008	1.148	0,0055
91900	MC12	12	3800864006913	13800864006910	316	238	142	3,6	3,81	1.008	1.185	0,0112
91900	SL3B12	36	3800864009693	33800864009694	451	326	286	10,8	12,014	648	1.022	0,0431
92150	MC12	12	3800864005145	13800864005142	296	223	158	3,12	3,424	1.008	1.132	0,0109
92151	MC12	12	3800864017551	13800864017558	288	217	137	2,22	2,398	1.176	1.150	0,009
92252	MC24	24	3800864027185	23800864027189	268	202	210	3,048	3,363	2.160	1.201	0,0115
92200	GB6B4	24	3800864007439	23800864007433	340	251	374	7,44	8,235	480	896	0,0322
92200	MC12	12	3800864002014	13800864002011	324	244	185	3,72	3,962	600	1.102	0,0152
92250	MC12	12	3800864035326	13800864035323	336	253	192	5,04	5,44	600	1.111	0,0165
92301	MC12	12	3800864004230	13800864004237	304	229	137	2,58	2,871	1.008	1.150	0,01
92301	SL6B8	48	3800864002045	43800864002043	516	316	276	10,32	11,387	720	992	0,0462
92400	GB6	6	3800864008641	-	210	144	172	1,47	1,558	1.116	1.196	0,0053
92400	MC12	12	3800864004247	13800864004244	281	211	174	2,94	3,24	1.080	1.228	0,0107
92400	SL6B6	36	3800864009990	33800864009991	401	273	346	8,82	9,779	972	1.202	0,0387
92500	MC12	12	3800864004254	13800864004251	280	211	166	3,084	3,268	1.080	1.180	0,0102
92502	GB6B4	24	3800864002106	23800864002100	370	271	341	5,76	6,619	648	1.171	0,0344
92502	MC12	12	3800864004261	13800864004268	360	271	167	2,88	3,152	648	1.158	0,0165
92502	SC6B6	36	3800864002113	33800864002114	544	271	331	8,64	10	648	1.141	0,0491
92503	GB6	6	3800864008658	-	200	139	184	1,47	1,557	1.224	1.268	0,0052
92503	MC12	12	3800864005435	13800864005432	271	206	186	2,94	3,242	1.020	1.107	0,0108
92503	SL3B12	36	3800864002137	33800864002138	401	255	373	8,82	9,933	972	1.283	0,0389
92504	GB6	6	3800864002175	-	200	135	159	1,29	1,368	1.296	1.118	0,0044
92504	MC12	12	3800864005442	13800864005449	270	204	162	2,58	2,753	1.224	1.156	0,0093
92504	SL3B12	36	3800864002168	33800864002169	396	251	326	7,74	8,723	972	1.142	0,0331
92505	MC12	12	3800864014154	13800864014151	314	237	155	3,72	3,935	864	1.114	0,0121
92506	GB6B4	24	3800864005367	23800864005361	331	251	408	6	6,804	480	964	0,0341
92506	MC12	12	3800864005350	13800864005357	320	241	197	3	3,241	720	1.136	0,0153
92507	MC12	12	3800864005459	13800864005456	304	229	177	4,02	4,235	936	1.246	0,0128
92508	MC12	12	3800864008825	13800864008822	320	241	137	3,84	4,051	1.008	1.150	0,0111
92509	MC12	12	3800864004278	13800864004275	306	226	161	3,24	3,445	864	1.150	0,0116
92516	MC12	12	3800864017674	13800864017671	288	217	173	3,42	3,616	1.008	1.222	0,0113
92519	MC12	12	3800864017681	13800864017688	269	201	149	2,4	2,564	1.512	1.234	0,0084
92520	MC12	12	3800864027161	13800864027168	338	254	159	4,08	4,439	720	1.106	0,0138
92521	MC12	12	3800864027178	13800864027175	356	268	172	4,8	5,213	648	1.216	0,0171
92522	MC12	12	3800864031151	13800864031158	316	238	151	3,54	3,858	1.008	1.210	0,0115
92524	BX6	6	3800864032875	-	242	163	214	2,04	2,161	750	1.231	0,0086
92524	MC12	12	3800864031618	13800864031615	324	244	214	4,08	4,335	720	1.221	0,0171
92530	MC12	12	3800864031489	13800864031486	340	256	169	4,08	4,329	720	1.166	0,0149
92531	MC12	12	3800864031496	13800864031493	316	238	149	3,36	3,571	1.008	1.196	0,0113
92600	MC12	12	3800864026928	13800864026925	376	283	128	3,48	3,749	768	1.222	0,0144
92600	SL3B16	48	3800864026744	43800864026742	616	378	255	13,92	15,603	768	1.191	0,061
92610	MC12	12	3800864029530	13800864029537	376	283	128	3,48	3,749	768	1.222	0,0144
92802	MC12	12	3800864004292	13800864004299	328	247	128	2,64	2,855	960	1.222	0,0109
93002	MC12	12	3800864029387	13800864029384	338	254	106	1,74	1,949	1.200	1.217	0,0092
93002	SL3B12	36	3800864032394	33800864032395	578	256	212	5,22	6,226	1.080	1.211	0,0316
93012	GB6B6	36	3800864030673	33800864030674	361	268	324	4,32	5,243	972	1.120	0,0315
93012	MC12	12	3800864029387	13800864029384	350	264	107	1,44	1,667	972	1.167	0,0105
93012	SL3B12	36	3800864032202	33800864032203	594	266	216	4,32	5,386	1.080	1.231	0,0344
93100	MC12	12	3800864004308	13800864004305	304	229	95	3,24	3,481	1.560	1.161	0,0071
93100	SL6B8	48	3800864029745	43800864029743	592	273	192	12,96	13,961	1.440	1.137	0,0322
93102	MC12	12	3800864004551	13800864004558	332	250	100	4,02	4,301	1.200	1.211	0,0089
93130	GB6	6	3800864006562	-	235	164	93	1,38	1,485	1.500	1.108	0,0037
93130	SL3B10	30	3800864002335	23800864002339	410	291	191	6,9	7,693	1.200	1.132	0,0236
93301	MC12	12	3800864004315	13800864004312	284	214	129	2,34	2,508	1.440	1.191	0,008
93301	SL6B8	48	3800864002373	43800864002371	496	306	261	9,36	10,406	960	1.193	0,0399
93302	TR25	25	3800864014611	-	401	401	114	5,625	6,074	1.350	1.172	0,0184
93303	TR25	25	3800864014994	-	401	401	118	5,625	6,029	1.350	1.172	0,0184
93304	TR25	25	3800864014390	-	401	401	125	4,875	5,288	1.350	1.271	0,0202
93401	GB6B6	36	3800864004582	33800864004583	483	241	194	7,92	8,677	1.260	1.121	0,0228
93401	SL3B10	30	3800864007569	23800864007563	384	289	192	6,6	7,373	1.200	1.137	0,0221

Item Code		Pieces per		Master Carton Barcode	Master Carton Width (mm)	Master Carton Length (mm)	Master Carton Height (mm)	Master Carton Weight - net (kg)	Master Carton Weight - gross (kg)	Pallet Quantity (pcs)	Pallet Height (mm)	Master Carton Cube (cbm)
		Master Carton	Unit Barcode									
93500	SL6B6	36	3800864002403	33800864002404	451	356	204	7,74	8,668	900	1.197	0,0339
93502	GB6B4	24	3800864002427	23800864002421	328	247	312	4,08	4,762	720	1.086	0,0255
93502	MC12	12	3800864004322	13800864004329	320	241	154	2,04	2,367	864	1.076	0,012
93502	SC6B8	48	3800864002434	43800864002432	473	323	306	8,16	9,585	720	1.066	0,047
93503	GB6B8	48	3800864004797	43800864004795	473	330	356	8,64	9,989	720	1.216	0,0559
93503	MC12	12	3800864004339	13800864004336	312	235	176	2,16	2,503	864	1.208	0,013
93503	SC6B4	24	3800864005954	23800864005958	312	235	350	4,32	5,009	864	1.198	0,0258
93504	GB6B8	48	3800864004766	43800864004764	480	324	351	8,88	10,187	720	1.203	0,055
93504	MC12	12	3800864004346	13800864004343	312	235	172	2,22	2,439	864	1.184	0,0127
93504	SC6B8	48	3800864002458	43800864002456	481	326	343	8,88	10,203	720	1.177	0,0541
93507	BX6	6	3800864020612	-	234	156	191	1,08	1,186	900	1.298	0,007
93508	BX6	6	3800864020650	-	241	161	199	1,44	1,554	750	1.156	0,0079
93512	GB6B4	24	3800864029455	23800864029459	338	259	430	5,52	6,399	480	1.008	0,0379
93512	MC12	12	3800864028359	13800864028356	340	256	212	2,76	3,193	600	1.211	0,0186
93512	SC6B4	24	3800864031281	23800864031285	338	259	423	5,52	6,395	480	993	0,0372
93516	BX6	6	3800864034398	-	271	181	225	1,47	1,678	456	1.047	0,111
93550	MC12	12	3800864008580	13800864008587	372	280	110	4,02	4,369	864	1.194	0,0122
93550	SL3B10	30	3800864008627	23800864008621	481	313	226	10,05	11,08	600	1.075	0,0351
93600	MC12	12	3800864026935	13800864026932	356	268	96	2,46	2,686	1.080	1.171	0,0098
93702	GB6B6	36	3800864006555	33800864006556	336	253	303	8,82	9,624	1.080	1.057	0,0259
93702	SL3B10	30	3800864002465	23800864002469	433	326	201	7,35	8,344	900	1.183	0,0294
93702	SL6B6	36	3800864014635	33800864014636	482	296	200	8,82	9,689	1.080	1.178	0,0295
93705	SL3B10	30	3800864002496	23800864002490	411	300	195	8,25	9,096	1.200	1.152	0,0249
93706	SL3B10	30	3800864007224	23800864007228	386	300	200	7,5	8,32	1.200	1.177	0,024
93805	SL3B10	30	3800864002502	23800864002506	400	301	193	7,35	8,172	1.200	1.142	0,0241
93805	MC48	48	3800864004353	43800864004351	474	318	188	11,76	12,153	1.200	1.091	0,0286
93810	SL3B10	30	3800864035463	23800864035467	404	287	208	7,5	8,321	1.200	1.191	0,0243
93810	SL6B6	36	3800864035470	33800864035471	568	163	309	9	9,852	1.080	1.075	0,0288
94001	MC12	12	3800864015007	13800864015004	312	235	88	1,968	2,145	1.584	1.186	0,007
94002	MC12	12	3800864014086	13800864014083	312	235	88	1,92	2,162	1.584	1.186	0,007
94010	MC12	12	3800864002533	13800864002530	292	220	99	1,92	2,151	1.680	1.201	0,0068
94010	SL6B8	48	3800864002526	43800864002524	576	261	202	7,68	8,646	1.440	1.188	0,0314
94100	MC12	12	3800864002588	13800864002585	281	211	88	2,7	2,906	2.160	1.280	0,0056
94130	SL3B12	36	3800864002618	33800864002619	288	251	257	6,48	7,19	1.728	1.177	0,0187
94300	SL6B6	36	3800864002625	33800864002626	421	262	184	6,3	6,962	1.620	1.071	0,0205
94401	SL3B12	36	3800864002649	33800864002640	288	251	257	6,48	7,19	1.728	1.177	0,0187
94500	MC12	12	3800864004377	13800864004374	256	193	107	1,74	1,939	1.944	1.167	0,0056
94500	SL6B6	36	3800864002656	33800864002657	361	258	216	5,22	5,864	1.620	1.258	0,0208
94502	GB6B8	48	3800864002670	43800864002678	451	310	290	7,2	8,313	864	1.009	0,0404
94502	MC12	12	3800864004384	13800864004381	296	223	140	1,8	1,985	1.176	1.138	0,0094
94502	SC6B8	48	3800864002687	43800864002685	441	292	278	7,2	8,21	864	982	0,036
94503	GB6B8	48	3800864004803	43800864004801	448	304	338	8,4	9,576	864	1.164	0,0464
94503	MC12	12	3800864004391	13800864004398	296	223	167	2,1	2,301	1.008	1.186	0,0115
94503	SC6B8	48	3800864008856	43800864008854	583	226	333	8,4	9,532	1.008	1.147	0,0441
94504	GB6B8	48	3800864004773	43800864004771	456	308	334	8,4	9,61	864	1.166	0,0479
94504	MC12	12	3800864004407	13800864004404	303	229	163	2,1	2,308	936	1.162	0,0118
94504	SC6B8	48	3800864002700	43800864002708	591	231	323	8,4	9,55	1.008	1.133	0,0451
94506	MC12	12	3800864008313	13800864008310	301	226	163	2,1	2,304	936	1.162	0,0116
94507	BX6	6	3800864020629	-	216	143	178	1,11	1,242	1.044	1.232	0,0056
94508	BX6	6	3800864020667	-	223	149	190	1,32	1,465	870	1.111	0,0064
94512	GB6B4	24	3800864029462	23800864029466	332	250	402	4,68	5,506	480	952	0,0336
94512	MC12	12	3800864028366	13800864028363	328	247	197	2,34	2,741	600	1.163	0,0165
94516	BX6	6	3800864034404	-	250	167	206	1,32	1,496	630	1.177	0,0086
94702	GB6B6	36	3800864006708	33800864006709	444	224	192	6,48	7,152	1.260	1.114	0,0193
94702	SL3B10	30	3800864002717	23800864002711	359	249	185	5,4	6,038	1.500	1.076	0,0167
94702	SL6B6	36	3800864014642	33800864014643	388	300	186	6,48	7,186	1.440	1.107	0,0225
94705	SL3B10	30	3800864002748	23800864002742	354	263	181	5,55	6,199	1.620	1.238	0,017
94706	SL3B10	30	3800864007538	23800864007532	344	263	181	5,25	5,887	1.800	1.238	0,0165
94805	MC12	12	3800864004414	13800864004411	276	208	87	2,16	2,36	1.980	1.175	0,0054
94805	SL3B12	36	3800864002779	33800864002770	302	255	263	6,48	7,228	1.728	1.223	0,0208
94810	SL3B10	30	3800864035487	23800864035481	369	266	182	6	6,68	1.620	1.244	0,018
94810	SL6B8	48	3800864035494	43800864035492	526	295	181	9,6	10,559	1.440	1.056	0,0283
95002	MC72	72	3800864007514	63800864007516	399	399	188	9,36	9,823	2.160	1.117	0,0311
95002	SL6B12	72	3800864005084	63800864005086	751	241	196	9,36	10,488	1.800	1.158	0,0368
95100	MC12	12	3800864002823	13800864002820	228	172	107	2,256	2,368	2.592	1.167	0,0045
95101	MC12	12	3800864004544	13800864004541	224	169	132	2,1	2,216	2.016	1.077	0,0051
95200	MC12	12	3800864002854	13800864002851	216	164	116	1,68	1,785	2.304	1.087	0,0042
95200	MC96	96	3800864002854	83800864002850	430	324	228	13,44	13,852	2.304	1.083	0,0328
95200	SL6B8	48	3800864002830	43800864002838	354	216	233	6,72	7,306	2.304	1.103	0,0184
95201	MC12	12	3800864008832	13800864008839	248	187	156	2,58	2,729	1.440	1.120	0,0076
95202	BX6	6	3800864024528	-	161	107	110	0,552	0,597	3.420	1.248	0,0018
95502	GB6B8	48	3800864002885	43800864002883	330	222	244	4,08	4,692	2.304	1.128	0,0181
95502	MC12	12	3800864013874	13800864013871	218	165	121	1,02	1,13	2.496	1.166	0,0046
95502	SC6B8	48	3800864014192	43800864014190	336	218	236	4,08	4,689	2.304	1.115	0,0178
95504	GB6B8	48	3800864008405	43800864008403	336	230	246	4,56	5,207	2.112	1.136	0,0192
95504	MC12	12	3800864008382	13800864008389	221	167	119	1,14	1,313	2.592	1.150	0,0047
95514	MC12	12	3800864029264	13800864029261	274	206	179	1,776	2,072	900	1.072	0,0105
96502	GB6B4	24	3800864008344	23800864008348	390	316	283	3,84	4,763	576	1.281	0,0351
96502	MC12	12	3800864008368	13800864008365	399	299	139	1,92	2,343	672	1.126	0,0168
96503	MC12	12	3800864009853	13800864009850	376	281	119	2,1	2,361	768	1.150	0,0133
96503	SC6B4	24	3800864010033	23800864010037	379	286	233	4,2	4,978	768	1.103	0,026
96504	GB6B4	24	3800864002557	23800864002551	566	212	201	4,32	4,987	840	1.156	0,0243
96504	MC12	12	3800864005879	13800864005876	268	202	195	2,16	2,459	900	1.126	0,0107

Item Code		Pieces per Master Carton	Unit Barcode	Master Carton Barcode	Master Carton Width (mm)	Master Carton Lenght (mm)	Master Carton Height (mm)	Master Carton Weight - net (kg)	Master Carton Weight - gross (kg)	Pallet Quantity (pcs)	Pallet Height (mm)	Master Carton Cube (cbm)
96504	SC6B4	24	3800864002540	23800864002544	422	272	196	4,32	4,974	720	1.134	0,0228
96505	GB6B4	24	3800864009426	23800864009420	414	288	208	4,44	5,14	960	1.191	0,025
96505	MC12	12	3800864013621	13800864013628	268	202	197	2,22	2,521	1.080	1.136	0,0108
96506	MC12	12	3800864008399	13800864008396	273	206	199	2,34	2,533	1.020	1.172	0,0116
96507	BX6	6	3800864020674	-	202	135	211	1,08	1,172	930	1.206	0,0058
96508	BX6	6	3800864020681	-	214	143	214	1,23	1,331	930	1.231	0,0067
96510	MC12	12	3800864012372	13800864012379	248	187	161	1,656	1,899	1.440	1.150	0,0078
96510	SC6B8	48	3800864011962	43800864011960	390	258	321	6,624	7,551	1.296	1.127	0,033
96512	GB6B4	24	3800864029479	23800864029473	408	276	229	4,56	5,26	768	1.065	0,026
96512	MC12	12	3800864028373	13800864028370	276	208	223	2,28	2,621	720	1.041	0,0129
97502	GB6B4	6	3800864010668	23800864010662	358	266	250	3,48	4,18	864	1.152	0,024
97502	MC12	12	3800864010675	13800864010672	344	259	123	1,74	2,06	960	1.138	0,0111
97502	SC6B6	36	3800864010682	33800864010683	509	264	244	5,22	6,178	864	1.125	0,033
99001	SL6B12	72	3800864009655	63800864009657	412	240	274	5,4	6,287	2.880	1.267	0,0278
99002	MC72	72	3800864017094	63800864017096	391	391	194	9,36	9,812	2.160	1.148	0,0307
99002	SL6B12	72	3800864015151	63800864015153	510	235	290	9,36	10,395	1.512	1.018	0,035
99003	MC72	72	3800864014185	63800864014187	366	366	178	9,36	9,754	2.160	1.067	0,0248
99003	SL6B12	72	3800864014109	63800864014101	412	240	274	9,36	10,247	2.880	1.267	0,0278
99011	MC72	72	3800864017902	63800864017904	366	366	178	5,76	6,154	2.160	1.067	0,0248
99011	SL6B12	72	3800864009662	63800864009664	412	240	274	5,76	6,647	2.880	1.267	0,0278

Notes

A large rectangular area with rounded corners, containing horizontal dotted lines for writing notes.

Notes

A large rectangular area with rounded corners, containing horizontal dotted lines for writing notes.

Notes

A large rectangular area with rounded corners, containing horizontal dotted lines for writing notes.



NEW GLASS JSC

36, Tzar Osvoboditel str.
9900 Novi Pazar
Bulgaria
Tel: +359 54 858300
Fax: +359 54 858430

„НОВО СТЬКЛО“ ЕАД

9900 гр. Нови Пазар
ул. Цар Освободител 36
България
Тел: +359 54 858300
Факс: +359 54 858430

e-mail: sales@newglass.bg

UNIGLASS HELLAS S.A.

25th Klm. New National Road
Athens - Korinthos
19600 Mandra Attica, Hellas
Tel: +30 213 0886400
Fax: +30 213 0886464

UNIGLASS HELLAS M.A.E.

25^ο Χλμ. Νέας Εθνικής Οδού
Αθηνών – Κορινθού
19600 Μάνδρα Αττικής
Τηλ.: 213 0886400
Φαξ: 213 0886464

e-mail: sales.gr@uniglass.eu

UNIGLASS GLASSWORKS SRL

19C Drumul intre Tarlale Str
077035 Cernica, Ilfov, Romania
Tel: +40 31 2280570

UNIGLASS GLASSWORKS SRL

Str. Drumul intre Tarlale nr.19C,
Cernica, Ilfov 077035, Romania
Tel: +40 31 2280570

e-mail: sales.ro@uniglass.eu

LLC "UNIGLASS UKRAINE"

Yablunska Str. 84, Bucha town
08294, Kiev Region, UkraineKind Regrads,
mob. +38067 351 62 60
tel. +380412 48 75 90

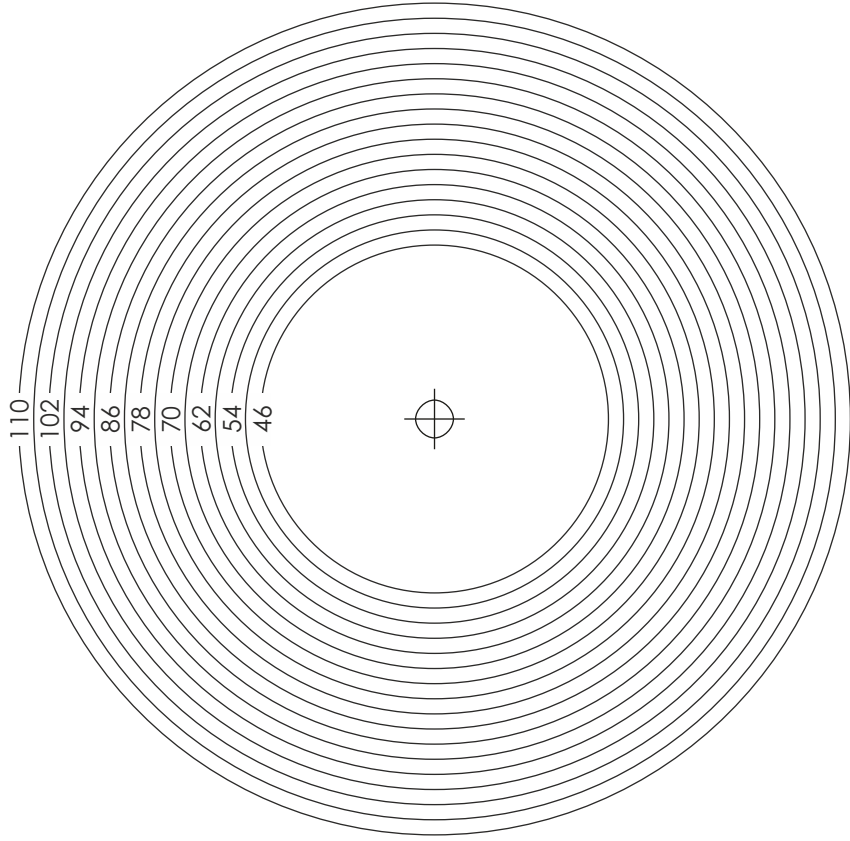
ТОВ «ЮНІГЛАСС УКРАЇНА»

вул. Яблунська, 84, м. Буча,
08294, Київська обл., Україна
моб. +38067 351 62 60
тел. +380412 48 75 90

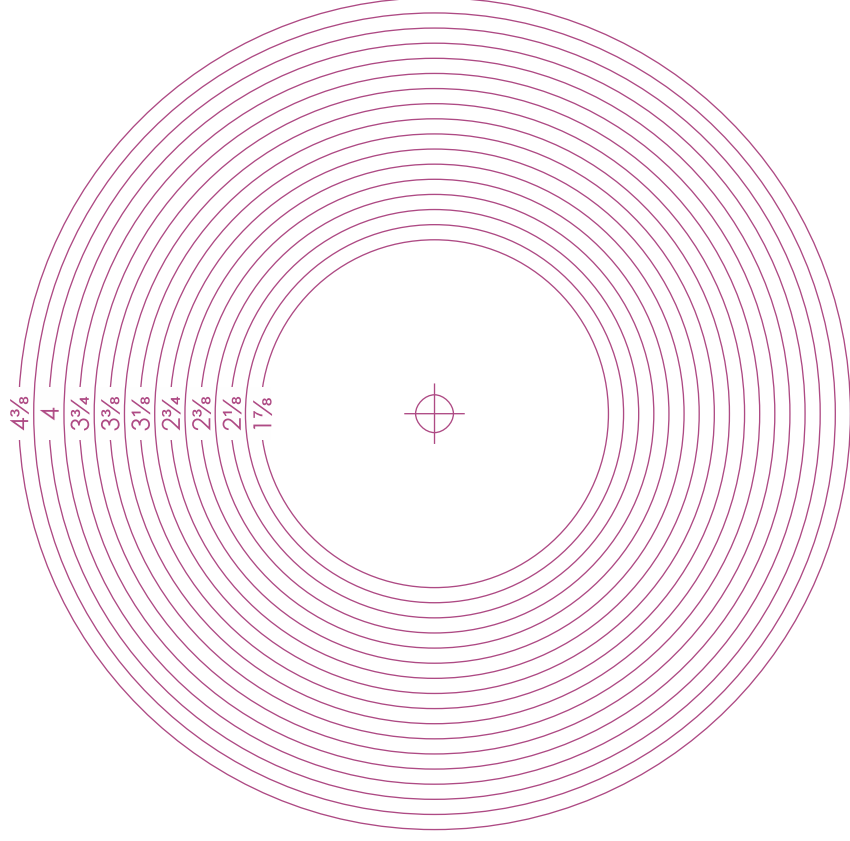
e-mail: sales.ua@uniglass.eu

www.uniglass.eu

millimeters



inches



centimeters



inches

